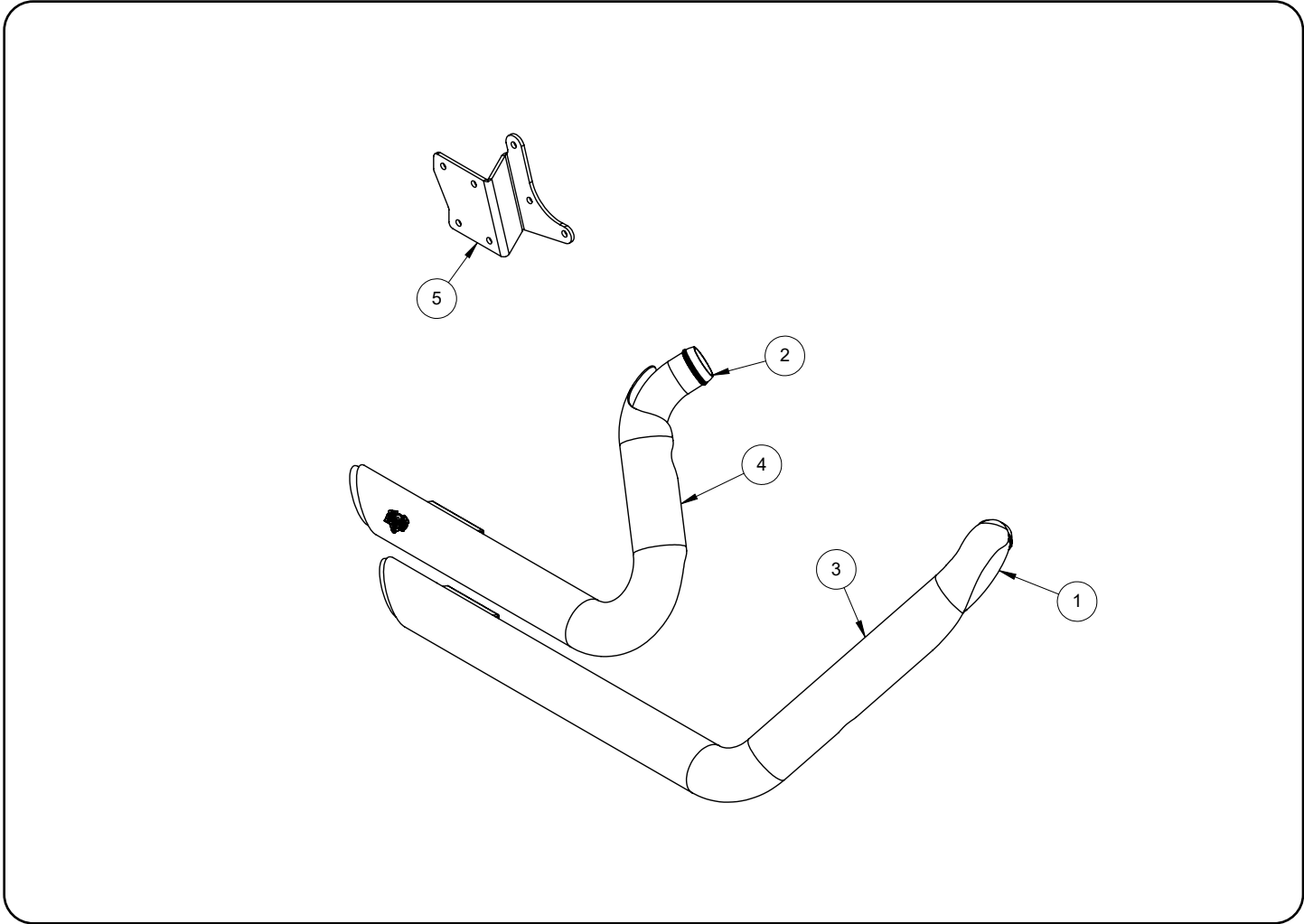


INSTALLATION INSTRUCTIONS: 2012-2017 HARLEY-DAVIDSON DYNA SHORTSHOTS STAGGERED PART# 17327/47327

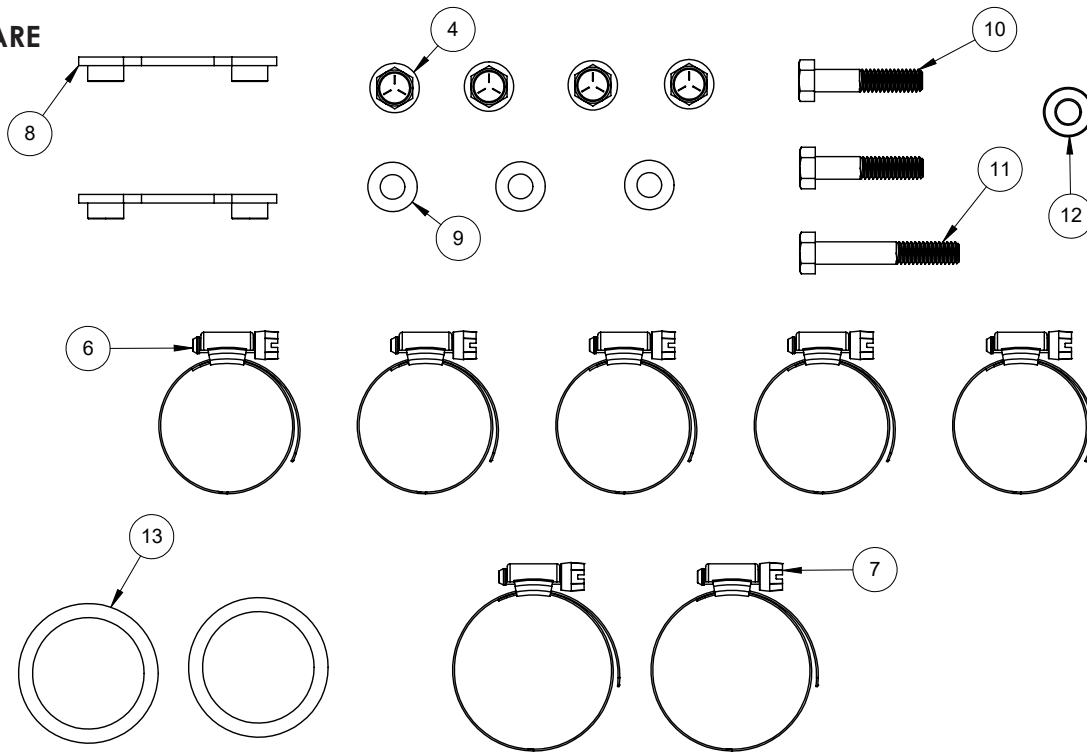
Congratulations, you have purchased the finest exhaust system available for your motorcycle. Your Vance & Hines exhaust is designed and crafted for performance, quality, and style. Please follow the instructions below, check exhaust system for missing or damaged parts and if you need any assistance please contact our technical support line (562) 921-7461.



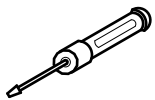
PARTS LIST

NO.	PART NO.	Description	Qty.
1	D412FC	Front Head Pipe	1
2	D413FC	Rear Head Pipe	1
3	D410HC/D412HP	Front Heat Shield	1
4	D411HC/D413HP-S	Rear Heat Shield	1
5	398-P	Mounting Bracket	1
6	A270HW	1.75" Hose Clamp	5
7	A272HW	2.25" Hose Clamp	2
8	A195HW	Dogbone Nutplate	2
9	A107HW	5/16" Flat Washer	3
10	A345HW	5/16"-18X1.5" Hex Screw	2
11	A503HW	5/16"-18X2.0" Hex Screw	1
12	D115ST-P	Dyna Bracket Spacer	1
13	A167HW	Exhaust Gasket	2

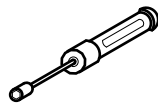
HARDWARE



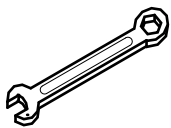
TOOLS REQUIRED



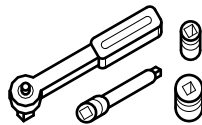
**Flat Head Screwdriver
and #3 Phillips Head**



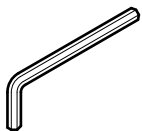
5/16" Nut Driver



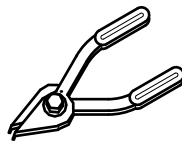
**Combination Wrench:
1/2", 14mm**



**3/8" Drive Ratchet & extension
1/2" Socket
7/16" Deep Socket
9/16" Deep Socket**



**Allen Wrenches: 3/16",
1/4"**



Snap Ring Pliers

STOCK EXHAUST SYSTEM REMOVAL

- 1.** Remove seat to gain access to rear oxygen sensor connector. Unplug sensor and feed end of wire through frame so that it is free from motorcycle. NOTE: Pay attention to wire routing for re-installation.
- 2.** Remove two bolts holding rectifier onto front of frame (near front tire). Open plastic cover to gain access to front oxygen sensor connector. Unplug sensor from harness.
- 3.** Loosen heat shield clamps on both the front and rear head pipes.
- 4.** Remove two cylinder exhaust port flange nuts from each head pipe, located at the cylinder head.
- 5.** Remove front head pipe clamp bolt.
- 6.** Remove the bolt that attaches mufflers to the frame mounting bar.
- 7.** Remove the complete exhaust system and set aside. Assistance may be required.
- 8.** Remove stock mounting bar and the studs in the transmission cover.
- 9.** Remove left bolt below the transmission cover. Position mounting bracket 398-P over mounting location to determine which bolts to remove (Figure 1). Install this bolt in the top hole left vacant by the new bracket.
- 10.** Carefully remove the flanges and circlips from the stock exhaust system using snapping pliers. NOTE: Replace bent or damaged circlips.
- 11.** Remove stock exhaust gaskets and replace them with the supplied exhaust gaskets. NOTE: Replacement gaskets HD Screaming Eagle #17048-98 or equivalent.
- 12.** Remove stock oxygen sensors using the 14mm wrench, set them aside for they will be re-used on new system.

VANCE & HINES EXHAUST INSTALLATION

1. Locate the 5/16 x 2.0" hex bolt (supplied) and insert this bolt with a 5/16" washer (supplied) into the top hole in bracket 398-P. Insert the 1 1/16" spacer between the bracket and transmission on the 5/16" x 2.0" hex bolt. Using the two remaining 5/16" x 1.5 hex bolts and 5/16" flat washer combinations (supplied) attach the bracket to the transmission. (Figure 1)
2. Remove head pipes and heat shields from protective packaging. Place each heat shield on a non-abrasive surface such as a blanket or carpet. Using a felt tip pen, mark outside edge of each heat shield to show location of hose clamp mounting clips (Figure 2).
3. Lay head pipes into heat shields and loosely install hose clamps by feeding tail end of clamp into heat shield clips (Figure 2). Take note of screw head direction (Figure 3). Screw head should be accessible when system is installed on motorcycle for adjustment purposes. Use #20 hose clamps for head pipe areas and #28 hose clamps for muffler areas. NOTE: Do not tighten at this time.
4. Install circlips and flanges from the stock system onto both new head pipes (Figure 4).
5. Apply a small amount of anti-seize compound to the threads of the oxygen sensors and install them into the new head pipes. NOTE: Be careful not to get anti-seize on sensor tip, it may affect sensor function.
6. Using stock flange nuts, carefully install head pipes into exhaust ports, starting with the rear cylinder. Assistance may be required. NOTE: Do not tighten at this time.
7. Slide nut plate inside bracket that is welded to backside of muffler bodies (Figure 5). While holding nut plates in place, attach muffler bodies to mounting bracket 398-P using four 5/16"x 5/8" flange head bolts (supplied). Leave them loose at this time. NOTE: Muffler body brackets should align with top edge of mounting bracket 398-P.
8. Tighten cylinder port exhaust flange nuts on front and rear cylinders while making sure pipes are parallel.
9. Tighten the 5/16 flange bolts on both mufflers.
10. Tighten all heat shield clamps. NOTE: muffler bodies should protrude from heat shields by 1/4" (Figure 6).
11. Feed wire for front oxygen sensor through frame and into plastic holder on frame. Plug sensor into stock wiring connector. Snap plastic holder closed to hold connector in place.
12. Put toothed edge of wiring holder into slot in frame. Re-install rectifier so that it fits under tooth of wiring holder, keeping it in place in frame. Tighten both bolts.
13. Feed connector for rear oxygen sensor through frame and into underseat compartment. Plug sensor into stock wiring connector.
14. Re-install seat.
15. Check for adequate clearance between all exhaust system components and motorcycle accessories prone to heat damage.
16. After installation and before starting motorcycle, completely clean pipes and mufflers with warm soapy water and a clean soft cloth that will not leave a residue. NOTE: Any residue, oil, or fingerprints will stain the chrome when the metal heats up.
17. Be sure to re-check and tighten all hardware before starting your motorcycle

Figure 1

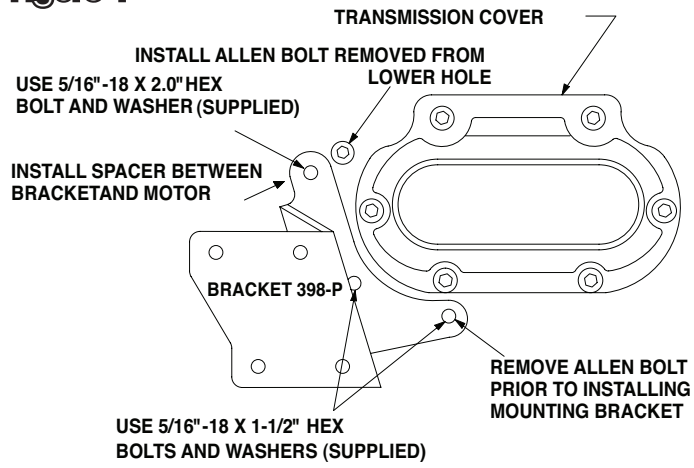


Figure 2



Figure 3

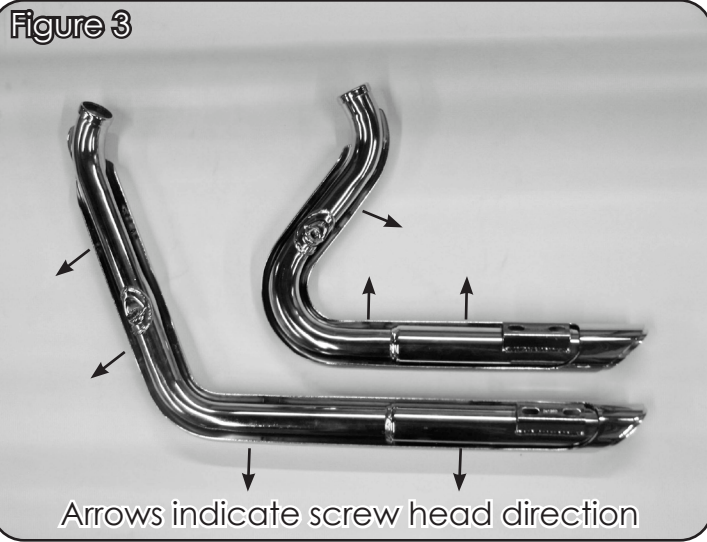


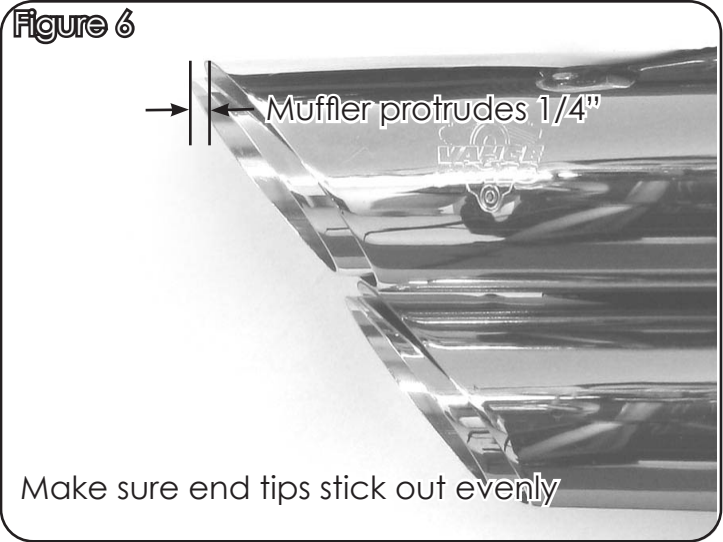
Figure 4



Figure 5



Figure 6



Emissions Notice:

In California, in order to meet Air Resources Board emissions requirements, certain aftermarket part applications have been identified as replacements, and others have received ARB Executive Orders. All other emissions related aftermarket parts are for competition use only. A list of replacement parts and EO parts, and corresponding fitment is provided at vanceandhines.com/California.

Warranty:

All Vance & Hines products are warranted against defects in material and workmanship for a period of 90 days. This warranty does not cover discoloration or rust. This warranty shall be limited to the repair or replacement of the product, which may be proven defective under normal use. Vance & Hines will not warranty any system that has been abused, misused, improperly installed or modified.

Dealers or distributors are not authorized to make dispositions binding upon Vance & Hines. Vance & Hines will not be responsible for any labor charges incurred in removing or replacing any system under warranty. A return authorization number and a copy of the original purchase invoice must accompany all returns. Parts returned without a return authorization may be refused.

13861 ROSECRANS AVENUE / SANTA FE SPRINGS, CA 90670
SALES: (562) 921-5388
TECHNICAL: (562) 926-5291
FAX: (562) 802-0110

vanceandhines
.com