

# POWER COMMANDER 6

Installation Guide for: PC6-20021

Model Coverage: 2010-2012 Suzuki GSX1250F

**POWER COMMANDER 6**

## PARTS LIST

×

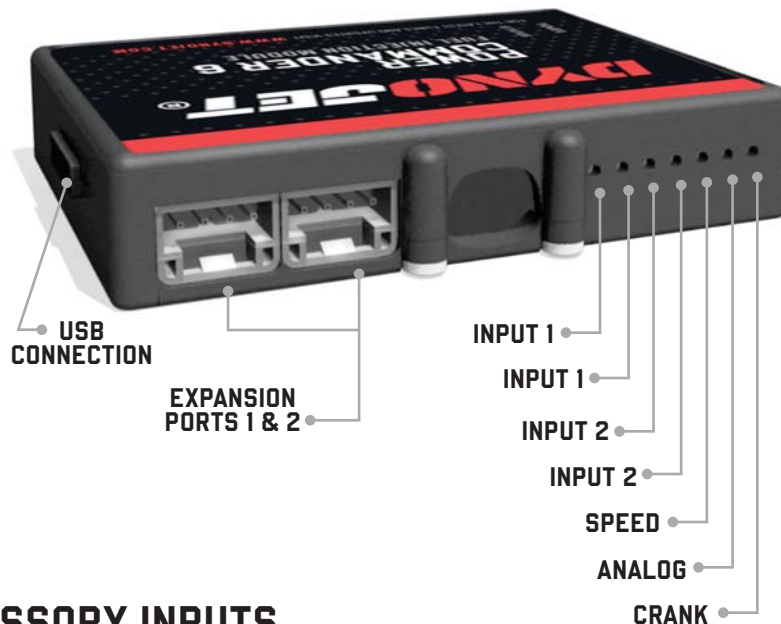
- |                      |                          |
|----------------------|--------------------------|
| 1 POWER COMMANDER 6  | 2 POWER COMMANDER DECALS |
| 1 INSTALLATION GUIDE | 2 VELCRO STRIPS          |
| 1 USB CABLE          | 1 ALCOHOL SWAB           |
| 2 DYNOJET DECALS     | 1 POSI-TAP               |

**PLEASE READ ALL DIRECTIONS BEFORE STARTING INSTALLATION.  
THE IGNITION MUST BE TURNED OFF BEFORE INSTALLATION.**

×

IPC6-20021.01

# INPUT ACCESSORY GUIDE



## OPTIONAL ACCESSORY INPUTS

- Map** (Input 1 or 2) The PC6 has the ability to hold 2 different base maps. You can switch on the fly between these two base maps when you hook up a switch to the MAP inputs. You can use any open/close type switch. The polarity of the wires is not important.
- Shifter** (Input 1 or 2) Used for clutch-less full throttle upshifts. Insert the wires from the Dynojet quick shifter into either Input 1 or Input 2. The polarity of the wires is not important. Set to Input 2 by default.
- Speed** If your application has a speed sensor then you can tap into the signal side of the sensor and run a wire into this input. This will allow you to calculate gear position in the Control Center Software. Once gear position is setup you can alter your map based on gear position and setup gear dependent kill times when using a quick shifter.
- Analog** This input is for a 0-5v signal such as engine temp, boost, etc. Once this input is established you can alter your fuel curve based on this input in the Power Core software.
- Launch** You can connect a wire to either Input 1 or Input 2 and then the other end to a switch. This switch when engaged (continuity) will only allow the RPM to be raised to a certain limit (set in the software). When released, you will have full RPM.

## WIRE CONNECTIONS

To input wires into the PC6 first remove the rubber plug on the backside of the unit and loosen the screw for the corresponding input. Using a 22-24 gauge wire, strip about 10mm from its end. Push the wire into the hole of the PC6 until it stops and then tighten the screw. Make sure to reinstall the rubber plug.

NOTE: If you tin the wires with solder it will make inserting them easier.



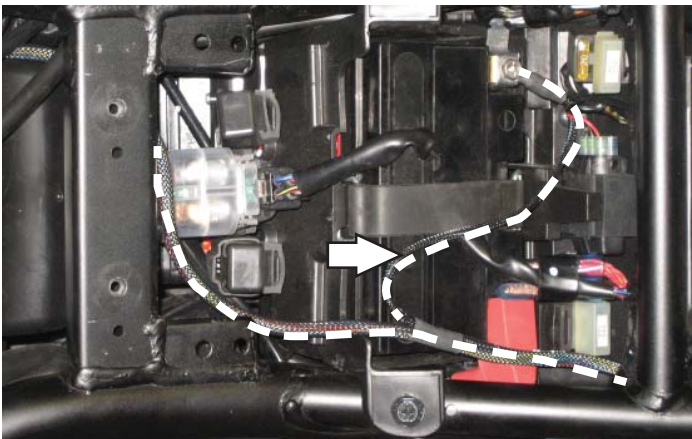
# INSTALLING THE POWER COMMANDER 6



- 1 Remove the left fairing. Remove the left side panel below the seat and fuel tank. Remove the fuel tank.
- 2 Secure the PC6 in the trunk area using the supplied Velcro.

Clean both surfaces with the supplied alcohol swab prior to applying the Velcro adhesive.

- 3 Route the PC6 harness long the left side of the bike and under the small frame crossover. Use the stock zip tie to secure the PC6 harness.

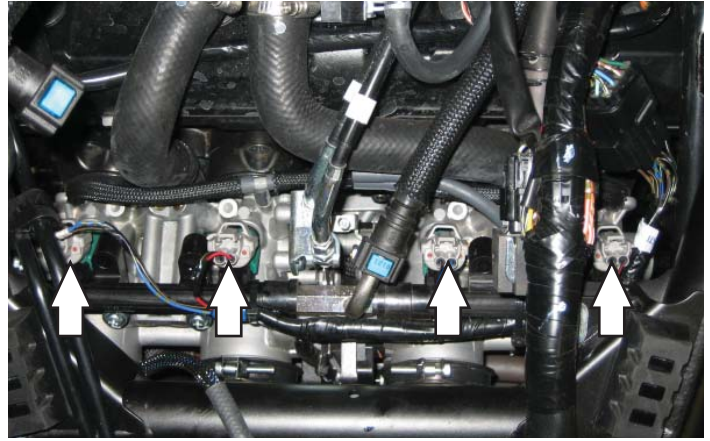


- 4 Attach the ground wire of the PC6 with the small ring lug to the negative (-) terminal of the bike's battery.
- 5 Route the PC6 harness down the right side of the bike and under the frame crossover that supports the fuel tank.



- 6 Route the PC6 harness along the stock main harness up to the throttle body.

7 Unplug the stock wiring harness from each fuel injector.



8 Plug the PC6 in-line of the stock wiring harness and fuel injectors.

BLUE wire to cylinder #1

GREEN wire to cylinder #2

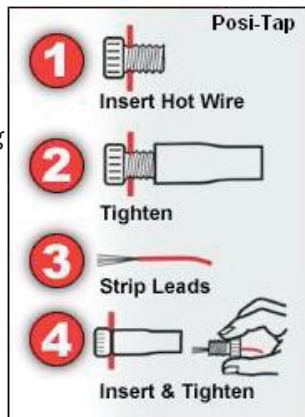
YELLOW wire to cylinder #3

ORANGE wire to cylinder #4

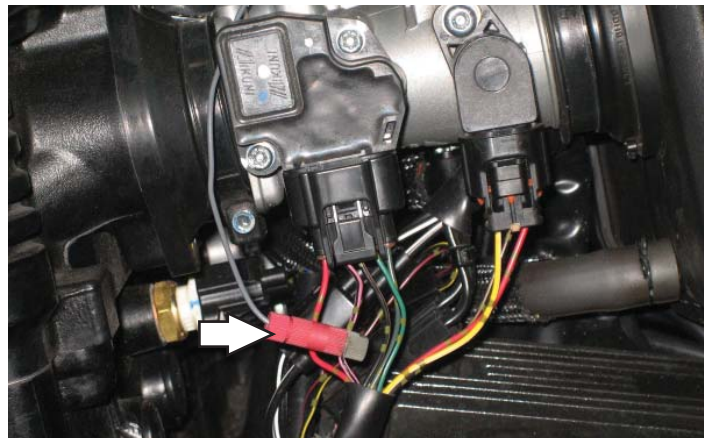


9 Locate the Throttle Position Sensor which is on the left hand side of the throttle bodies.

10 Connect the GREY wire from the PC6 to the PINK/BLACK wire of the stock wiring harness using the supplied Posi-tap.



11 Reinstall the seat, the left fairing, and the left side panel.



Download the latest map files from our web site at [dynojet.com/tunes](http://dynojet.com/tunes).

#### Optional Inputs:

Speed input - PINK wire of black 3-pin connector under left side panel.

12v source for Autotune – GREY wire of 3-pin connector for tail light.



# **PUSH THE LIMIT**

**2191 MENDENHALL DRIVE, NORTH LAS VEGAS, NV 89081 - 800-992-4993 - DYNOJET.COM**

**© 2010-2022 DYNOJET RESEARCH ALL RIGHTS RESERVED**