

POWER COMMANDER 6

Install guide for: PC6-10007

Model coverage: 2016-2020 Aprilia Tuono 1100

PARTS LIST



- | | | | |
|---|--------------------|---|------------------------|
| 1 | POWER COMMANDER 6 | 2 | POWER COMMANDER DECALS |
| 1 | INSTALLATION GUIDE | 2 | VELCRO STRIPS |
| 1 | USB CABLE | 1 | ALCOHOL SWAB |
| 2 | DYNOJET DECALS | 2 | POSI-TAPS |

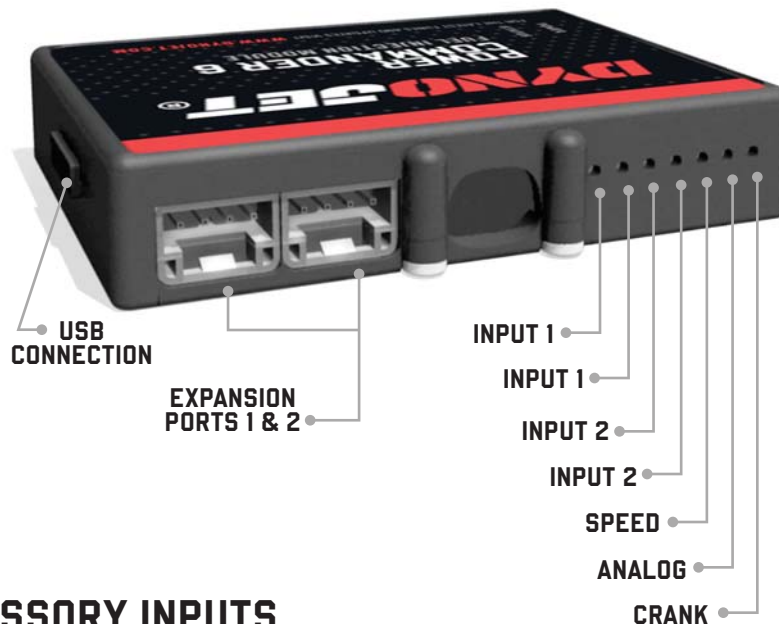
**PLEASE READ ALL DIRECTIONS BEFORE STARTING INSTALLATION.
THE IGNITION MUST BE TURNED OFF BEFORE INSTALLATION.**



IPC6-10007.01

APRILIA
DYNOJET

INPUT ACCESSORY GUIDE



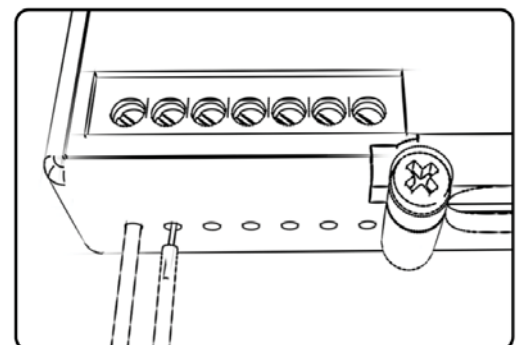
OPTIONAL ACCESSORY INPUTS

- Map** (Input 1 or 2) The PC6 has the ability to hold 2 different base maps. You can switch on the fly between these two base maps when you hook up a switch to the MAP inputs. You can use any open/close type switch. The polarity of the wires is not important.
- Shifter** (Input 1 or 2) Used for clutch-less full throttle upshifts. Insert the wires from the Dynojet quick shifter into either Input 1 or Input 2. The polarity of the wires is not important. Set to Input 2 by default.
- Speed** If your application has a speed sensor then you can tap into the signal side of the sensor and run a wire into this input. This will allow you to calculate gear position in the Control Center Software. Once gear position is setup you can alter your map based on gear position and setup gear dependent kill times when using a quickshifter. .
- Analog** This input is for a 0-5v signal such as engine temp, boost, etc. Once this input is established you can alter your fuel curve based on this input in the Power Core software.
- Launch** You can connect a wire to either Input 1 or Input 2 and then the other end to a switch. This switch when engaged (continuity) will only allow the RPM to be raised to a certain limit (set in the software). When released, you will have full RPM.

WIRE CONNECTIONS

To input wires into the PC6 first remove the rubber plug on the backside of the unit and loosen the screw for the corresponding input. Using a 22-24 gauge wire, strip about 10mm from its end. Push the wire into the hole of the PC6 until it stops and then tighten the screw. Make sure to reinstall the rubber plug.

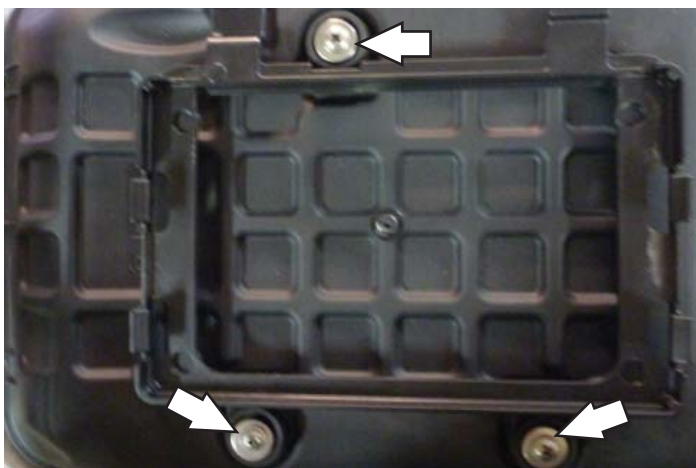
NOTE: If you tin the wires with solder it will make inserting them easier.



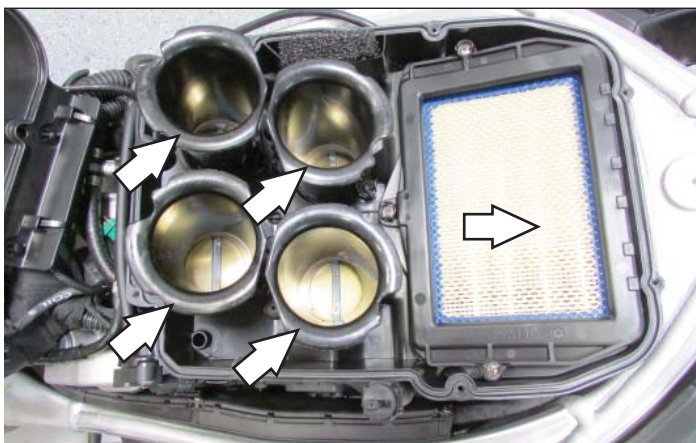
INSTALLING THE POWER COMMANDER 6



- 1 Remove the seat.
- 2 Remove the fuel tank.
- 3 Unplug the stock wiring harness from the ECU.

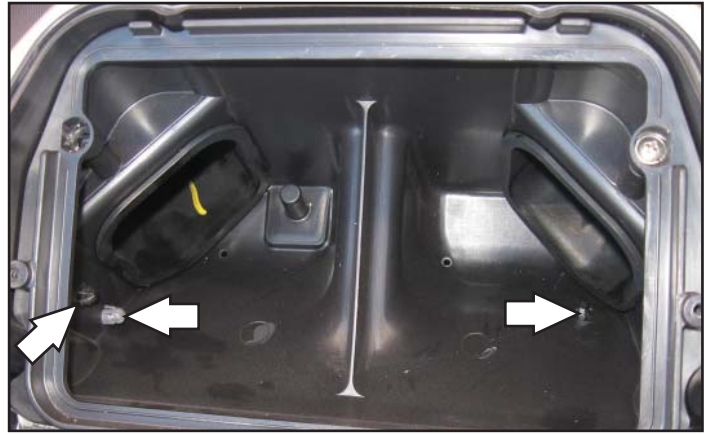


- 4 Remove the ECU tray by removing the three screws.
- 5 Remove the air box lid.



- 6 Remove the velocity stacks and the air filter.

- 7 Remove the lower half of the air box. There are three pins that must be squeezed to be removed.



- 8 Unplug the stock wiring harness from each of the four injectors.

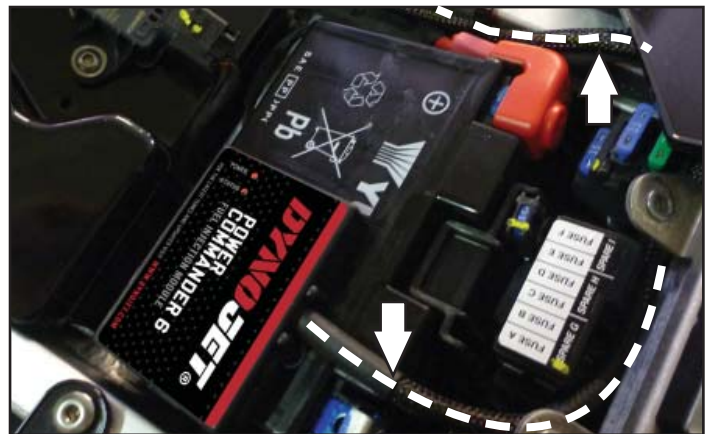


- 9 Using the supplied Velcro, secure the PC6 to the side of the battery.

Make sure to clean the surfaces with the alcohol swab before attaching.

- 10 Secure the ground wire from the PC6 module to the negative (-) terminal on the battery.

- 11 Route the PC6 harness along the sub-frame and go towards the throttle bodies.



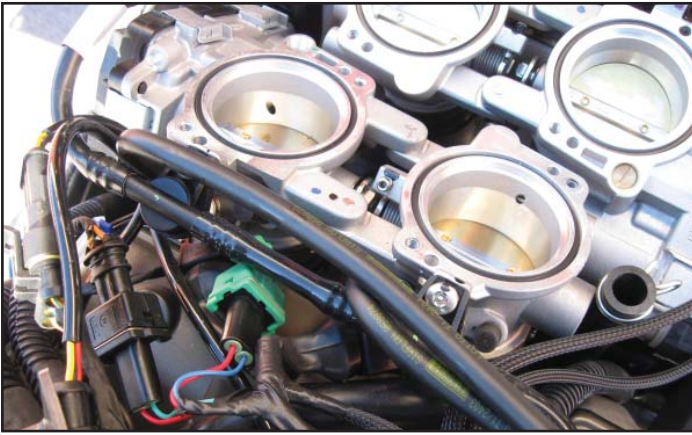
- 12 Plug the connectors from the PC6 in-line of the fuel injectors and stock wiring harness.

PC6 Harness:

Orange - table #1 - stock brown connector

Yellow - table #2 - stock gray connector





- 13 Plug the connectors from the PC6 in-line of the fuel injectors and stock wiring harness.

PC6 Harness:

Green - table #3 - stock black connector

Blue - table #4 - stock green connector



- 14 Locate and unplug the crank position sensor connectors.

The 3-pin black connector pair is located on the right side of the engine.



- 15 Plug the 3-pin connectors from the PC6 in-line of the stock crank position sensor connectors.
- 16 Reinstall the air box, velocity stacks, and the air filter.

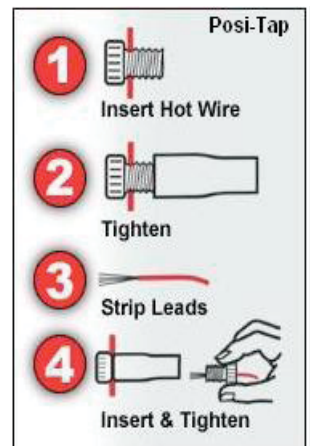


- 17 Cut back about 1-inch of tape from the stock ECU harness for the larger connector.

- 18 Attach the black/white wire from the PC6 to the stock green/black wire of the stock wiring harness.

- 19 Attach the gray wire from the PC6 to the stock yellow/black wire of the stock wiring harness.

- 20 Reinstall the ECU, the fuel tank, and the seat.



Download the latest map files from our web site at dynojet.com/tunes.



PUSH THE LIMIT

2191 MENDENHALL DRIVE, NORTH LAS VEGAS, NV 89081 - 800-992-4993 - DYNOJET.COM

© 2015-2022 DYNOJET RESEARCH ALL RIGHTS RESERVED