

POWER COMMANDER 6

Install guide for: PC6-22090

Model coverage: 2019-2020 Yamaha R3

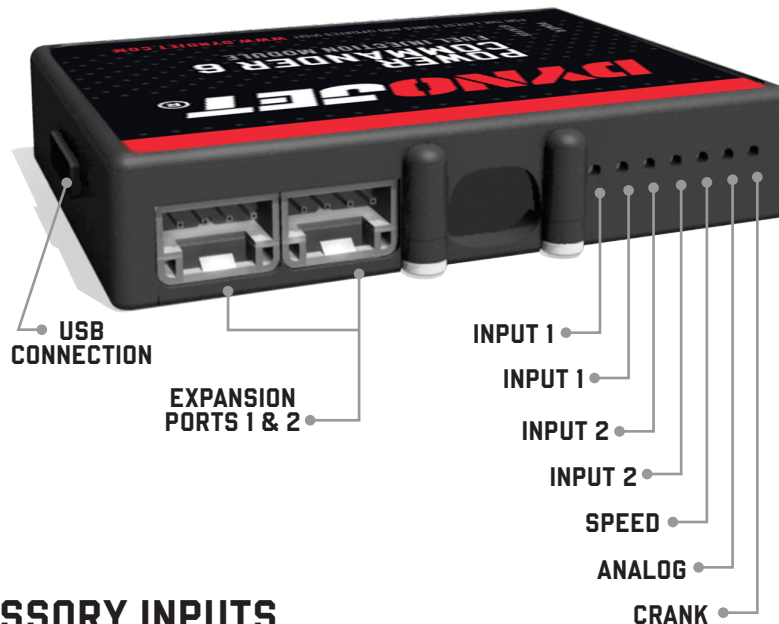
PARTS LIST

- 1 POWER COMMANDER 6
- 1 INSTALLATION GUIDE
- 1 USB CABLE
- 2 DYNOJET DECALS
- 2 POWER COMMANDER DECALS
- 2 VELCRO STRIPS
- 1 ALCOHOL SWAB
- 1 POSI-TAP
- 1 EO LABEL

**PLEASE READ ALL DIRECTIONS BEFORE STARTING INSTALLATION.
THE IGNITION MUST BE TURNED OFF BEFORE INSTALLATION.**



INPUT ACCESSORY GUIDE



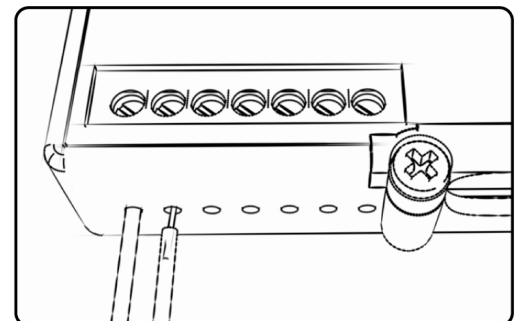
OPTIONAL ACCESSORY INPUTS

- Map** (Input 1 or 2) The PC6 has the ability to hold 2 different base maps. You can switch on the fly between these two base maps when you hook up a switch to the MAP inputs. You can use any open/close type switch. The polarity of the wires is not important.
- Shifter** (Input 1 or 2) Used for clutch-less full throttle upshifts. Insert the wires from the Dynojet quick shifter into either Input 1 or Input 2. The polarity of the wires is not important. Set to Input 2 by default.
- Speed** If your application has a speed sensor then you can tap into the signal side of the sensor and run a wire into this input. This will allow you to calculate gear position in the Control Center Software. Once gear position is setup you can alter your map based on gear position and setup gear dependent kill times when using a quickshifter.
- Analog** This input is for a 0-5v signal such as engine temp, boost, etc. Once this input is established you can alter your fuel curve based on this input in the Power Core software.
- Launch** You can connect a wire to either Input 1 or Input 2 and then the other end to a switch. This switch when engaged (continuity) will only allow the RPM to be raised to a certain limit (set in the software). When released, you will have full RPM.

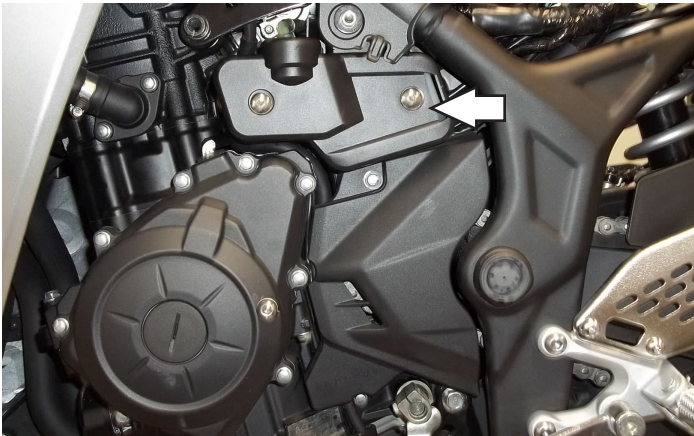
WIRE CONNECTIONS

To input wires into the PC6 first remove the rubber plug on the backside of the unit and loosen the screw for the corresponding input. Using a 22-24 gauge wire, strip about 10mm from its end. Push the wire into the hole of the PC6 until it stops and then tighten the screw. Make sure to reinstall the rubber plug.

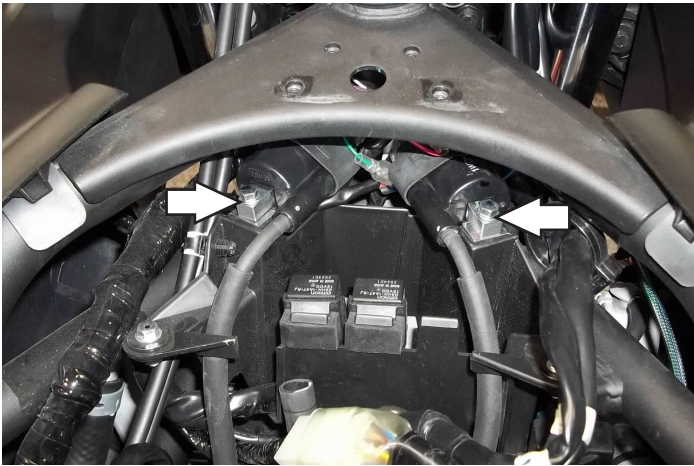
NOTE: If you tin the wires with solder it will make inserting them easier.



INSTALLING THE POWER COMMANDER 6



- 1 Remove the seats, the lower left side fairing, the fuel tank shell, the side panels below the fuel tank, and the fuel tank.
- 2 Loosen the coolant reserve bottle.

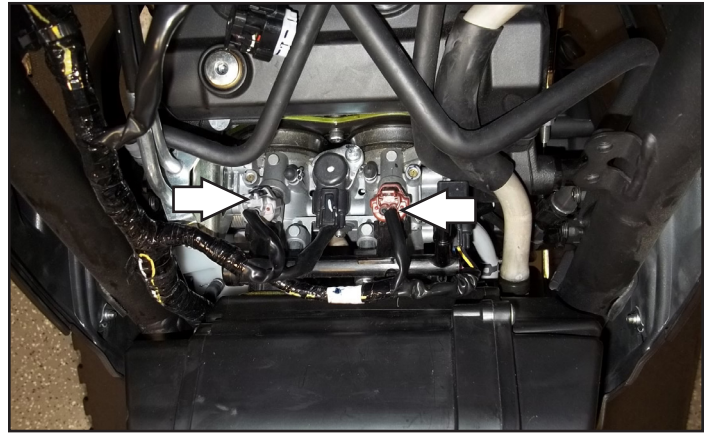


- 3 Remove the bolts that hold the ignition coils in place. This allows access to the wiring harness.
- 4 Lay the PC6 in the tail section and route the harness down the right side of the bike and go towards the coils.



- 5 Plug the PC6 in-line of the ignition coils and wiring harness.
PCV Green wires - left coil - ORANGE stock wire.
PCV Red/Wht wires - left coil - RED/BLK stock wire.
PCV Blue wires - right coil - GRY/RED stock wire.

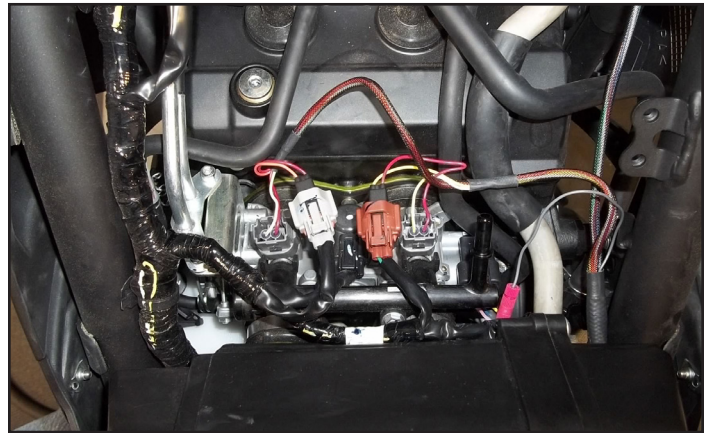
6 Unplug the stock harness from the fuel injectors.



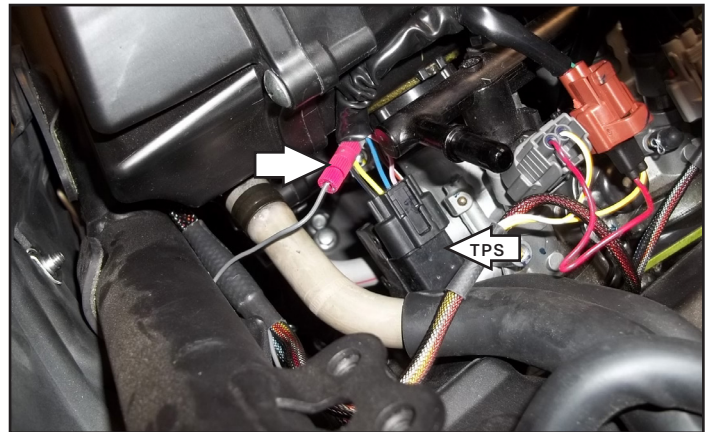
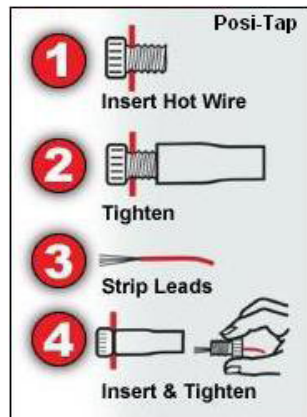
7 Plug the PC6 in-line of the stock injectors and wiring harness.

PCV Orange wires - left, Grey stock connector.

PCV Yellow wires - right, Brown stock connector.

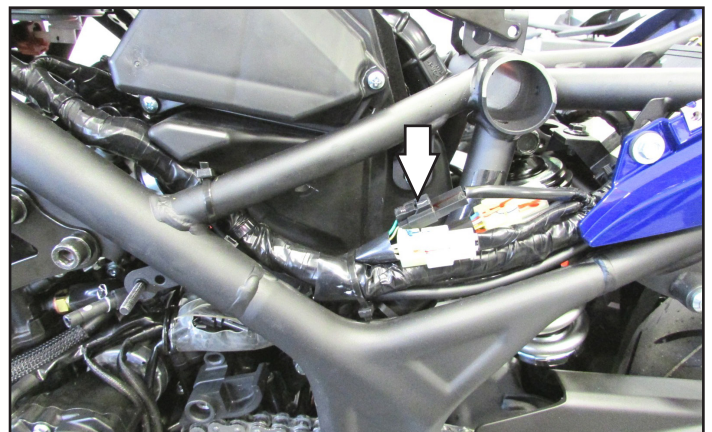


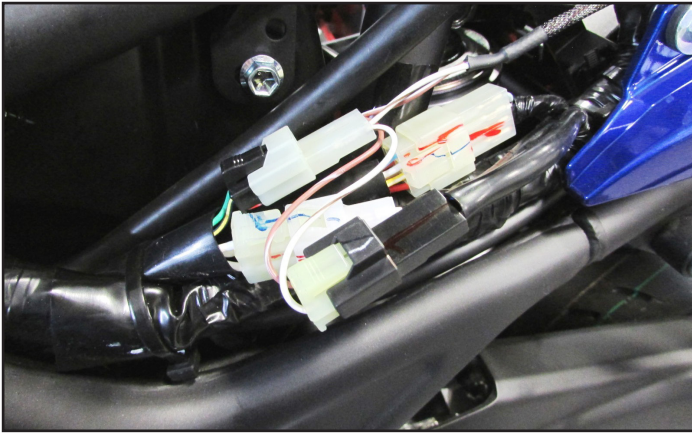
8 Using the supplied Posi-Tap attach the GREY wire of the PC6 to the stock YELLOW wire of the bike's Throttle Position Sensor.



9 Unplug the crank position sensor connector.

This is a BLACK connector pair on the left side of the motorcycle.





- 10 Plug the PC6 in-line of the stock CPS and wiring harness.



- 11 Secure the PC6 in the tail section using the supplied Velcro.

Make sure to clean both surfaces with the alcohol swab before attaching

- 12 Attach the ground wire from the PC6 to the negative (-) side of the battery.
- 13 Reinstall the coils, the fuel tank, the coolant reserve bottle, all of the bodywork, and the seats.
- 14 Affix the supplied CARB E.O. label to a conspicuous area. Next to the original emissions label is the preferred location. Make sure to clean the surface before attaching.

Download the latest map files from our web site at dynojet.com/tunes.



PUSH THE LIMIT

2191 MENDENHALL DRIVE, NORTH LAS VEGAS, NV 89081 - 800-992-4993 - DYNOJET.COM

© 2019-2022 DYNOJET RESEARCH ALL RIGHTS RESERVED