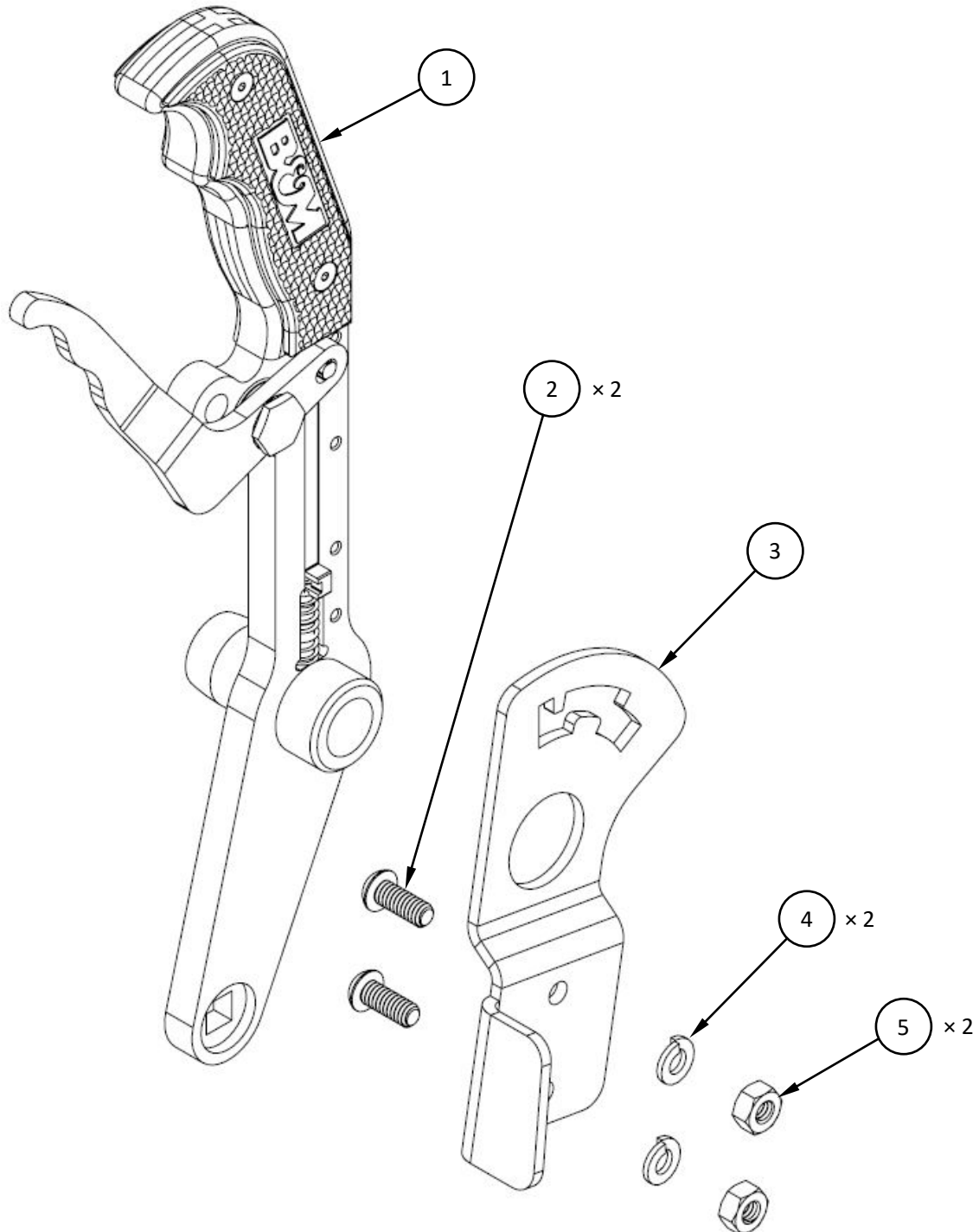


INSTALLATION INSTRUCTIONS
Part No. 81169
**MAGNUM GRIP HILL KILLER GATED
SHIFTER for 2008-2018 POLARIS RZR
800cc (NO CONSOLE BOOT)**





INSTALLATION INSTRUCTIONS
 Part No. 81169
**MAGNUM GRIP HILL KILLER GATED
 SHIFTER for 2008-2018 POLARIS RZR
 800cc (NO CONSOLE BOOT)**

PARTS LIST

ITEM NO.	PART NO.	DESCRIPTION	QTY.
1	N/A - SHIPS ASSEMBLED	SHIFT LEVER ASSEMBLY, POLARIS RZR, 2008-2018, NO BOOT	1
N/A	4001496	• STICK, MAGNUM GRIP GATED SHIFTER, POLARIS RZR	1
	4001286	• PIN, SELECTOR STOP, GATED SHIFTER POLARIS RZR	1
	4001492	• MAGNUM GRIP SIDE PLATE, LEFT, DIAMOND KNURL, BLACK	1
	4001495	• MAGNUM GRIP SIDE PLATE, RIGHT, DIAMOND KNURL, BLACK	1
	4001498	• PIVOT SLEEVE, MAG GRIP GATED SHFTR POLARIS RZR, EARLY	1
	4001497	• SPRING, SELECTOR POLARIS RZR	1
	3401537	• SCREW, 6-32 x 5/16", FLAT SOCKET HEAD	4
	3401559	• PIN, DOWEL M5 X 18MM MCM #91585A553	1
	3400533	• WASHER, CURVED SPRING, #U375-0100S	1
	4001482	• LEVER, LOCKING, BLK ANODIZE M-GRIP BLACK	1
	4001393	• BOLT, SHOULDER CHROME	1
2	3401556	SCREW, 1/4"-20 x 5/8" BUTTONHEAD	2
3	4001782	GATE, HILL KILLER, MAGNUM GRIP SHIFTER, POLARIS RZR, EARLY	1
4	3401557	WASHER, 1/4" SPLIT LOCK	2
5	3401555	NUT, 1/4"-20	2

Before starting, take a moment to read and understand these instructions for your XDR Off-Road Magnum Grip Gated Shifter. Use the parts drawing and list to verify your kit's contents. In the unlikely event of missing parts, please contact B&M Racing Technical Support for replacements.

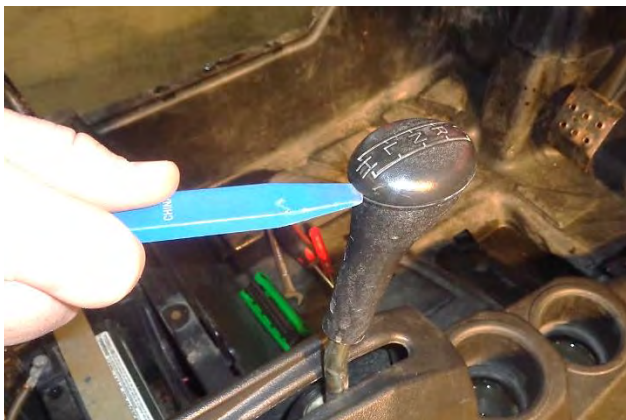
We highly recommend that you retain all factory parts.

REMOVE THE STOCK SHIFTER:

1. Securely chock the vehicle's wheels to keep it from rolling when the shift lever is manipulated.



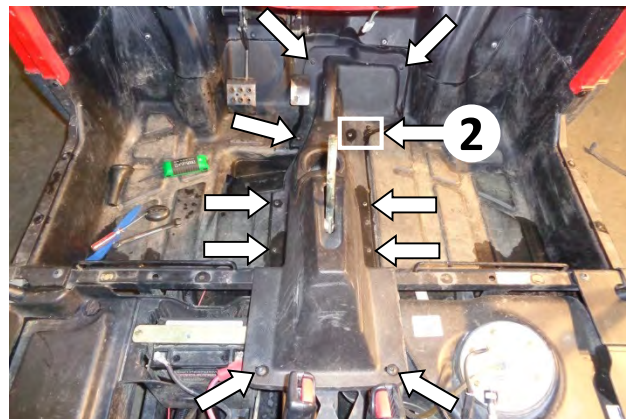
2. Remove the seats from the vehicle to allow for removal of the center console.



3. Remove the cap from the top of the shifter knob.



4. Remove the shifter knob screw, then pull the knob off the shift lever.



5. Remove the eleven center console screws and retain for use at Step 22. **NOTE: To aid in reassembly, note the type of screw (thread type and length) removed from each location.**



6. Remove the center console from the vehicle.



7. Move the shifter to NEUTRAL, to allow access to the shift cable lock nut. Remove the nut and retain for use at Step 16, and disconnect the cable from the shift lever.



8. Remove the retaining clip and **retain for use at Step 16**. Then remove the shift lever from its shaft.



9. Remove the two nylon bushings from the shift lever and **retain for use at Step 10**.

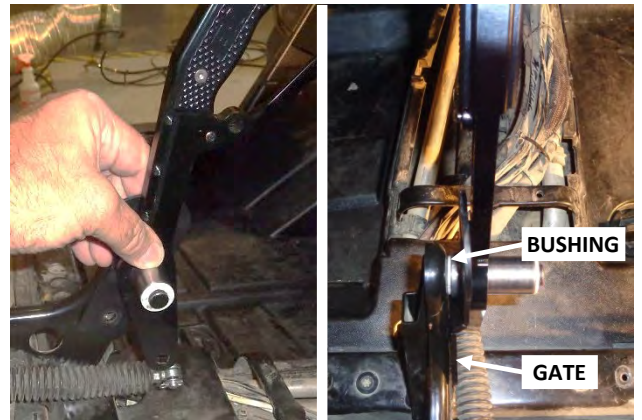
INSTALL YOUR XDR OFF-ROAD GATED SHIFTER:



10. Install the two nylon bushing in the shift lever assembly (1).



11. Place the shifter gate (3) over the pivot sleeve, locating the selector pin is located in the gate's REVERSE-NEUTRAL (widest) notch.



12. Hold the gate and shift lever together and slide them onto the shift lever shaft. Ensure that both the gate and nylon bushing are fully flush against the shifter support frame.



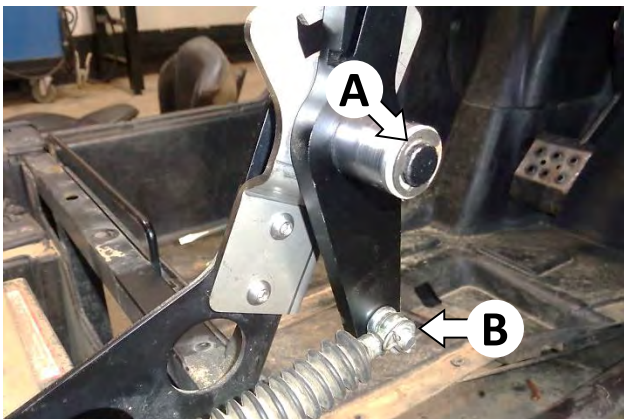
13. Clamp the gate firmly against the shifter support frame.



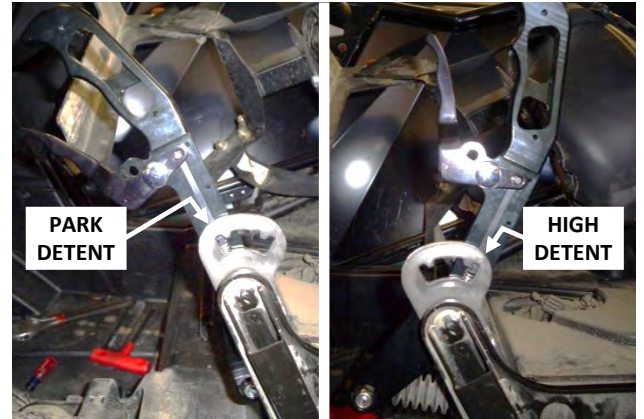
14. Using the holes in the gate as guides, drill two 1/4" holes through the shifter support frame.



15. Fasten the gate to the shifter support frame using the screws (2) (on the passenger side), and lock washers (4) and nuts (5) (on the driver side).



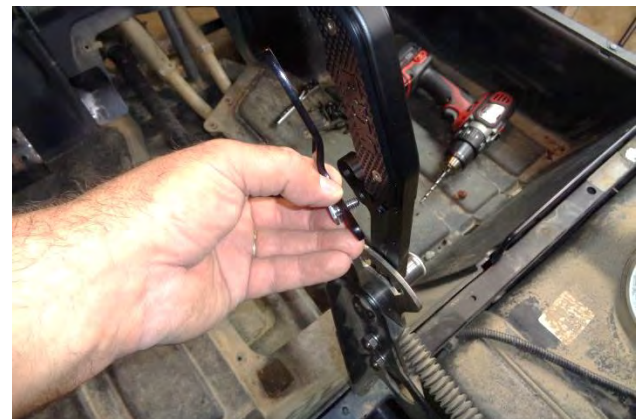
16. Attach the retaining clip to the end of the shaft (A). Attach the cable end to the shift lever (B) with the stock lock nut, making sure that the screw's square shoulder is properly seated in the hole.



17. Move the shift handle from PARK to HIGH and back several times, releasing the locking lever at both positions. If the selector pin falls into both the PARK and HIGH detents when the locking lever is released, the shift cable is correctly adjusted.



18. If the selector pin only falls into one of the detents, adjust the shift cable according to your owner or maintenance manual.



19. Remove the locking lever from the shift lever assembly. **NOTE: Do not lose the small spring washer that is under the bolt head.**



20. Remove both side plates.



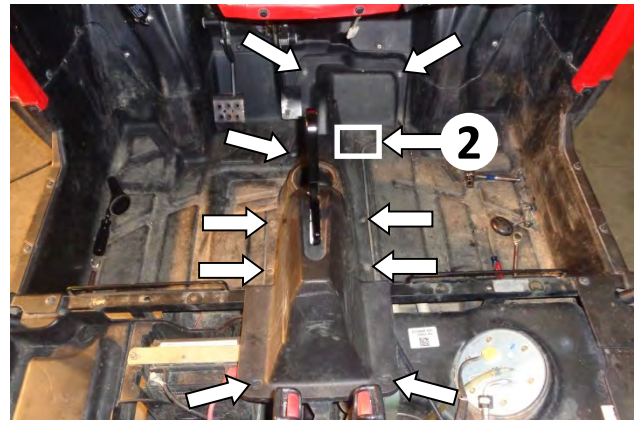
21. Install the center console.



22. Reinstall the locking lever, spring washer and bolt. Ensure that the lever properly engages the selector pin.



23. Reinstall the two side plates.



24. Reinstall the eleven center console screws, taking care to use the correct screws at each location as determined in Step 5.



25. Reinstall the seats in the vehicle. **Congratulations, the installation of your XDR Off-Road Magnum Grip Hill Killer Gated Shifter is now complete!**



- Customize your new Gated Shifter with B&M Magnum Grip Accessory Side Plates!
- Available in rosewood; billet aluminum (black, natural, or with a momentary switch); and diamond knurl polycarbonate (seven colors).