

**FOR OFF ROAD/RACE USE ONLY!**



**Part # DRP-737**

**18-20 Ducati panigale V-4**

**Installation Instructions**

**Removal**

1. Remove lower fairing on both sides to reveal rear set bracket bolts
2. Remove shift side plate (left side)
3. Remove Heim joint and shift shaft (m6 bolt)
4. Remove Heel guard (right side)
5. Remove master cylinder and plunger pin
6. Remove brake switch from frame bracket

**Tools Required**

- 8mm Open End Wrench
- 5mm Hex Key
- 6mm Hex Key
- 8mm Hex Key
- Needle Nose Pliers
- Screw Driver
- Blue Loctite
- Impact Gun

**THE USE OF BLUE LOCTITE IS REQUIRED ON ALL MOUNTING HARDWARE!**

**Installation**

**Left Side Installation**

1. Install left side foot peg into frame bracket.
2. Connect shift rod into bell crank in the desired position (std or gp shif) see fig 2
3. Install frame bracket assembly into place using supplied bolts
4. tighten all bolts and nuts (use blue Loctite)

**TORQUE VALUES**

- M5 = 6FT/LBS
- M6 = 10FT/LBS
- M8 = 25FT/LBS
- M10 = 45FT/LBS

**Right Side Installation**

1. Install right side foot ped into frame bracket
2. Install brake switch into frame bracket ( adjust for proper distance ) use blue Loctite
3. Install plunger assembly into brake pedla
4. Connect master cylinder into frame bracket
5. Connect frame bracket into bike using supplied bolts
6. Reassemble both lower fairing sides

**Note. When installing the plunger you must adjust it for proper brake pedal reach and insure there is free play in the pedal when done.**

**Note. Use blue Loctite on all bolts including all rear set and mounting points torque all bolts and recheck after 500 miles.**

**Note. Before riding your bike make sure rear brake switch is working properly and nothing is iZmpeding free movement.**

**ZZ**

**THIS PRODUCT IS INTENDED TO BE INSTALLED BY A CERTIFIED TECHNICIAN\***

**FOR OFF ROAD/RACE USE ONLY!**



Reverse Shift



Std Shift



Brake side



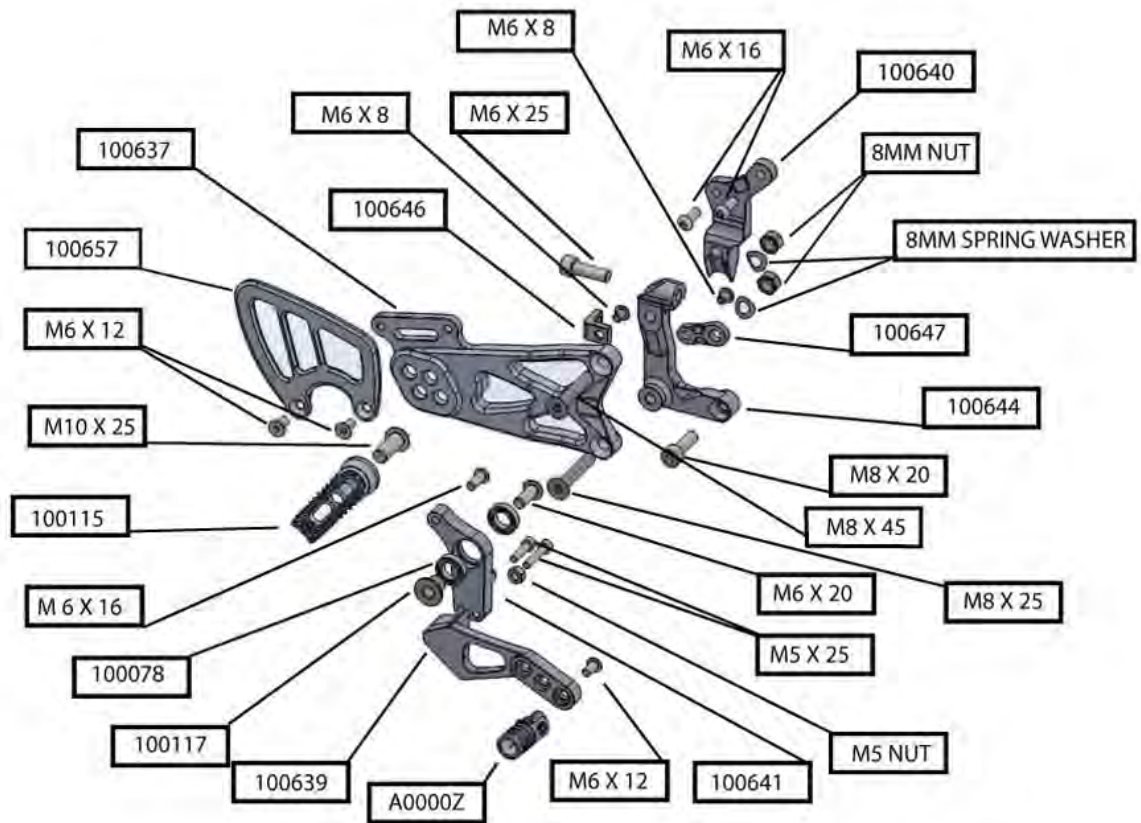
Brake side backend

**THIS PRODUCT IS INTENDED TO BE INSTALLED BY A CERTIFIED TECHNICIAN\***

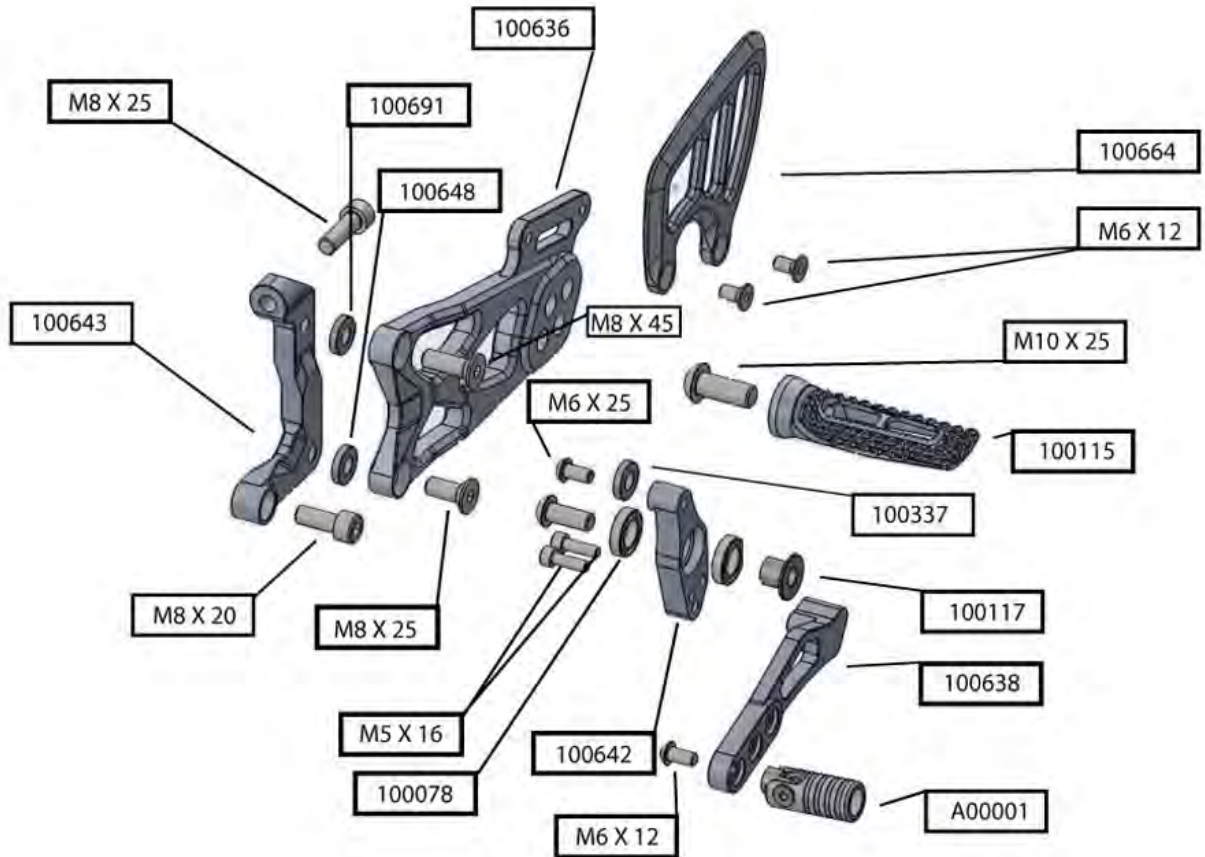
**FOR OFF ROAD/RACE USE ONLY!**



**DRIVEN PERFORMANCE PRODUCTS**



\*Right side



\*Left side

**THIS PRODUCT IS INTENDED TO BE INSTALLED BY A CERTIFIED TECHNICIAN\***