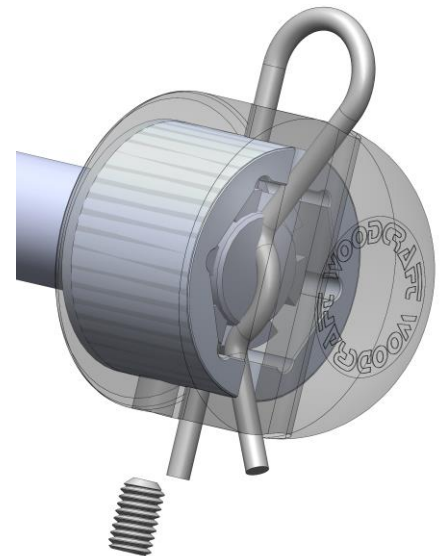
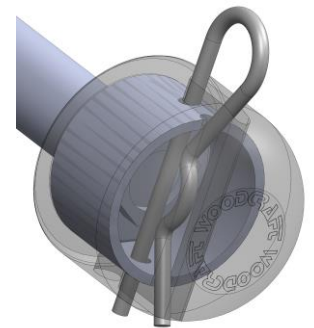
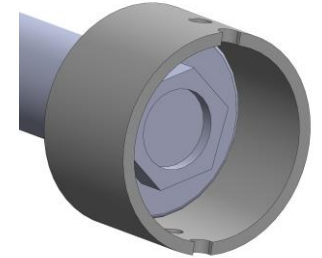




45-0144FR  
Installation Instructions  
Kawasaki Ninja 400 Axle Slider Kit

- 1) Remove the axle from the motorcycle
- 2) **Axle Side:** Slider the 45-0144SPA base over the axle and then re-install the axle
- 3) Tighten the axle as you normally would. Make sure that the axle nut lines up so that the hole for the clevis pin is lined up perfectly in the center of a gap in the end of the nut.
- 4) Install the 45-1144 slider puck onto the 45-0144SPA base by lining up the holes in the puck with the holes in the base and then securing the puck to the base with the clevis pin as shown at the right.
- 5) **Nut Side:** Install the 45-0144A hex mounting block on the nut. You must align the holes in the mounting block so that they line up with the same hole that you selected to use for the axle nut safety clip.
- 6) Install the 45-1144 slider puck onto the 45-0144A base by lining up the holes in the puck with the holes in the base and then securing the puck to the base with the clevis pin as shown at the right.
- 7) The nut side assembly will stay in place with just the clevis pin, but for the most secure connection use the supplied set screw 04-ST610 to lock the nut side assembly onto the axle nut.



To remove the axle, simply pull off the clevis pins and remove the pucks to gain access to the axle and axle nut. On the nut side, you will need to loosen the set screw by a half turn in order to remove the puck and base.

105 Baldwinville Rd, Winchendon, MA 01475

978-297-2977

WARNING: Improper installation and/or failure to comply with all warnings and instructions may cause a loss of control and serious injury or death. The motorcycle should be run and thoroughly inspected before use. DO NOT INSTALL OR USE THIS PRODUCT IF YOU ARE UNABLE TO DO SO IN COMPLIANCE WITH ALL INSTRUCTIONS AND WARNINGS. SEEK THE ASSISTANCE OF A TRAINED PROFESSIONAL TECHNICIAN