



# YOSHIMURA

RESEARCH&DEVELOPMENT OF AMERICA, INC.

5420 DANIELS STREET STE A, CHINO CA., 91710 · (800) 634-9166 · (909) 628-4722 · FAX (909) 591-2198

[www.yoshimura-rd.com](http://www.yoshimura-rd.com)

## **Street Series**

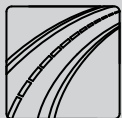
Qualified Manufacturer Declared "Replacement Part"

**2013~2017**

**Triumph Daytona 675/R**

**19675BP520 (SS/CF)**

**Alpha Taper Stainless Steel Slip-On**



All Street Series systems are:

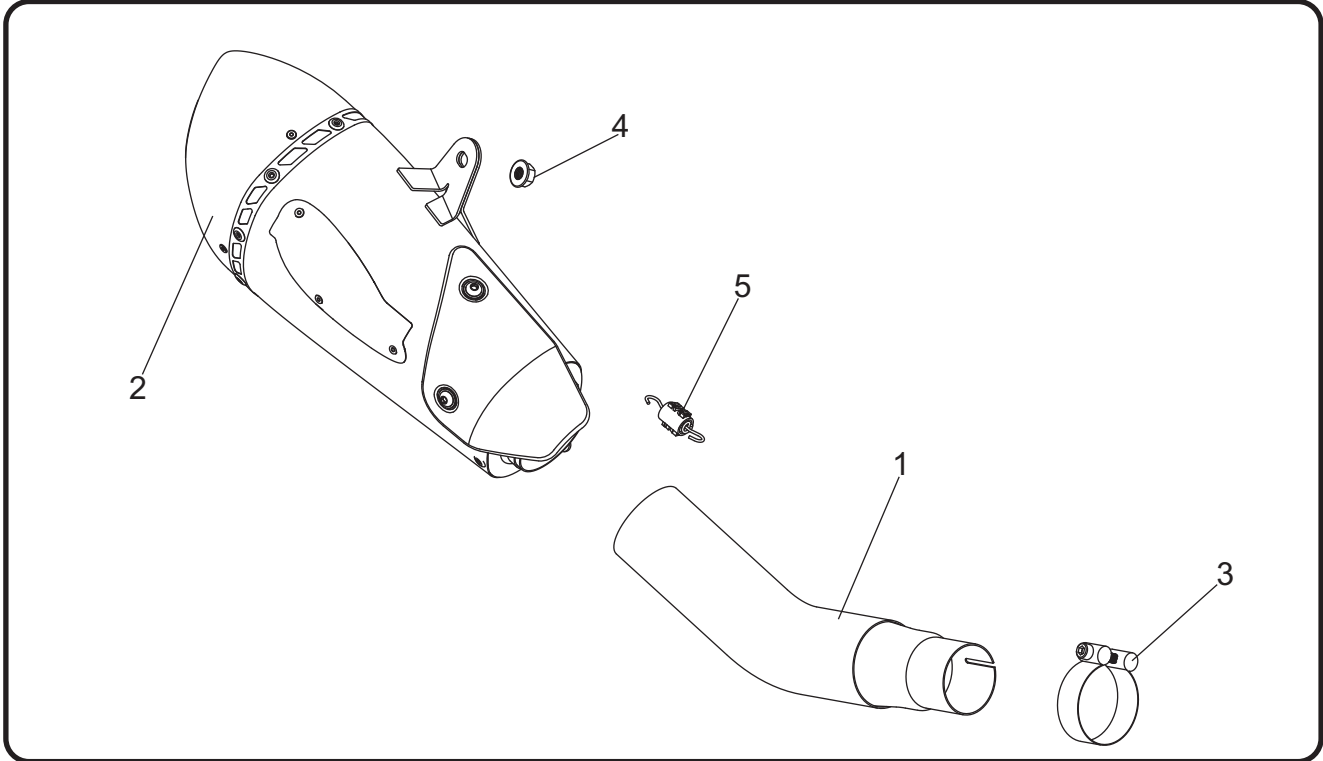
- Slip-on/Bolt-on applications that do not require tampering with the vehicle's emissions control system.
- CARB/EPA tail-pipe emissions compliant.
- Marked with appropriate EPA noise labels.
- Not tested for EPA new vehicle noise compliance.



✘ You must know how to remove and replace your stock exhaust in order to install this product otherwise have it installed by a professional mechanic. Keep all stock parts from your existing system as some components may be necessary to install your new Yoshimura exhaust depending on the application. Read through all instructions before beginning installation. Exhaust system can be extremely hot. Let motorcycle cool down before beginning installation. Always wear hand and eye protection and take precautionary measures to avoid injury. ✘

NOTE: IN THE STATE OF CALIFORNIA, IT IS ILLEGAL TO MODIFY THE EMISSION CONTROL SYSTEM, WHICH INCLUDES THE CARBURETORS OF ANY VEHICLE.

## Assembly Diagram



No.	Item	Description	Qty.
1	19675-435	Yoshimura Tailpipe	1
2	19675BP520-RMA	Yoshimura Muffler	1
3	27-61M	Exhaust Clamp	1
4	8MMNUT	8mm Flange Nut	1
5	RACE-SPX-1	Small Exhaust Spring	1
**	ESRM-2	Exhaust Servo Plug	1
**	ST-200	Spring Puller Tool	1
**	INS-27-K	Low Volume Sound Insert	1
**	17029	Sticker Sheet	1

\*\* Not Shown on diagram.

**CAUTION:** Exhaust system can be extremely hot. Let motorcycle cool down before beginning installation. Always wear hand and eye protection and take precautionary measures to avoid injury.

**WARNING:** Always properly support vehicle with a stand and/or lift when servicing or performing any work. Unstable vehicles may present dangerous conditions and may cause property damage and/or personal injury.

**NOTE:** Read through all instructions before beginning installation.

## Removal

1. Remove upper muffler heatshield to access exhaust valve cables.
2. Disconnect exhaust valve cables from the stock muffler assembly.
3. Remove right side lower muffler heatshield to access exhaust clamp.
4. Remove muffler exhaust clamp nut.
5. While securely supporting the stock muffler assembly, remove the three muffler chassis mount bolts and carefully remove the stock muffler assembly.

Note<sup>1</sup>: The stock exhaust clamp, gasket, and header flanged sleeve will not be re-used.

Note<sup>2</sup>: If necessary, loosen right side footpeg bracket bolts for more clearance when removing muffler assembly.

6. Locate and disconnect exhaust valve servo connector.

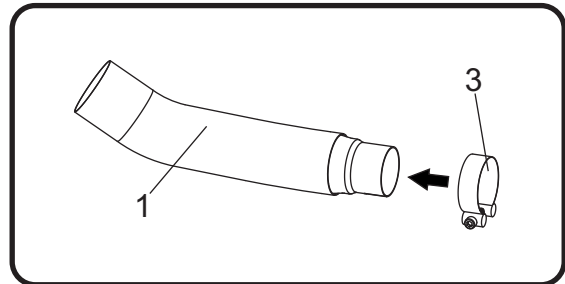
Note: Do not turn ignition to the "On" position while exhaust valve servo connector is unplugged. Doing so will result in the "Check Engine" light illuminating.

7. Remove the two bolts securing the exhaust valve servo motor to frame and carefully remove with the cables.

Note: Exhaust valve servo motor and cables will not be used with the Yoshimura system.

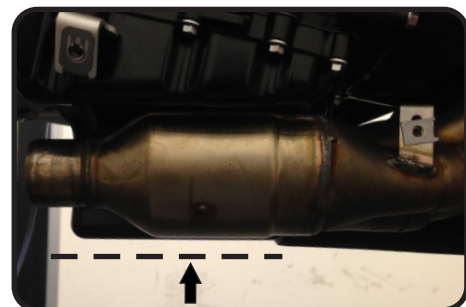
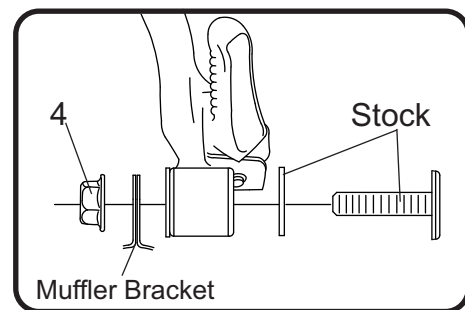
## Installation

1. Connect supplied *ESRM-2*, exhaust servo plug into exhaust servo motor connector.
2. Slide (No. 3) *27-61M*, exhaust clamp over (No. 1) *19675-435*, tailpipe inlet as shown. Do not torque clamp at this time.



3. Install (No. 1) *19675-435*, tailpipe outlet into (No. 2) *19675BP520-RMA*, muffler inlet.
4. Install muffler/tailpipe assembly onto stock header outlet. Align muffler bracket to the backside of muffler mount and secure using the stock bolt, washer, and (No. 4) *8MMNUT*, 8mm flange nut.

Note: In some cases, it may be required to loosen the header nuts if having difficulty aligning muffler bracket to muffler mount. Follow the factory service manual for fairing removal to access header nuts. The header must be level to the oil pan.



5. Torque muffler mount bolt to factory specification.

Note: Torque header nuts to factory specification if loosened. Re-install fairings using the opposite steps of removal.

6. Install (No. 5) *RACE-SPX-1*, small exhaust spring between muffler and tailpipe using the *ST-200*, spring puller tool supplied in the kit.
7. Torque (No. 3) *27-61M*, exhaust clamp to 8.5 Nm (0.86 kg-m, 6 ft-lbs).
8. Before starting vehicle, check for proper clearance between new exhaust system and rear suspension (i.e. tire, swingarm, brakes, rear shock, and etc.) If any problem is found, please carefully follow through the installation steps again. If problem still persists, please call Yoshimura Tech Department at (800) 634-9166 / in CA (909) 628-4722.
9. It is recommended that the muffler and tailpipe be wiped down with rubbing alcohol to remove oil and fingerprints. This will help prevent tarnishing of the finish after the exhaust is heated up.

Note: After starting motorcycle, it is normal for new exhaust system and muffler to emit smoke until oil residue burns off.

## **Works Finish Care & Maintenance**

---

Before starting vehicle, clean pipe thoroughly using a soft cloth and rubbing alcohol to remove any oil and finger prints.

The color of the exhaust will change once the system has gone through a heat cycle of 15 minutes or more. Color will vary depending on lean/rich conditions.

Clean using a soft cloth and soap. Do not use abrasive materials as it will scratch the surface.

Surface reconditioning services are available to remove scratches and undesirable discoloration due to extreme heat. Contact Yoshimura Tech Department at (800) 634-9166 / in CA (909) 628-4722 for more information.