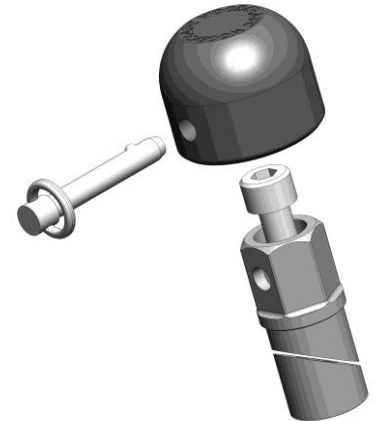


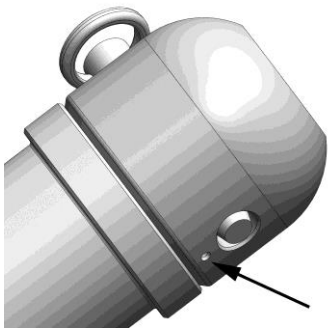
**1) Both Sides:** The large aluminum base with the expansion slot will be installed in the axle itself. Both sides are the same on the scrambler. To install the base, thread the 8x30mm socket head bolt into the assembly until it is almost tight, leaving a small gap between the halves. Slide the assembly into the center hole and be sure that it is fully seated against end of the axle.

You do not have to remove the nuts to install the slider bases

**Important Note:** Sometimes axles are damaged when people hammered them into place. This will slightly deform the axle itself. Since our axle sliders are a precise fit, you will need to file off any raised edges on the inside of the axle. You will not need to do this on an axle in good condition.



2) Tighten the 8mm allen bolt to lock the assembly in place. Hold the hex with a 19mm six sided socket (not an open end wrench, as this can damage the slider base) while doing this to ensure you can fully lock the axle side in place.



3) Install the plastic top using the removable pin. **Important:** One side of the puck has a small hole drilled beneath the main hole (see picture at left). Install the pin so that the end of the pin with the ball is on the same side as this small hole. The pin should be installed so that the ring is on the top half of the slider.



105 Baldwinville Rd, Winchendon, MA 01475

978-297-2977

WARNING: Improper installation and/or failure to comply with all warnings and instructions may cause a loss of control and serious injury or death. The motorcycle should be run and thoroughly inspected before use. DO NOT INSTALL OR USE THIS PRODUCT IF YOU ARE UNABLE TO DO SO IN COMPLIANCE WITH ALL INSTRUCTIONS AND WARNINGS. SEEK THE ASSISTANCE OF A TRAINED PROFESSIONAL TECHNICIAN.