



QUICK START
INSTALLATION GUIDE

CONTENTS

- 1 Power Vision Unit
- 1 Diagnostic Cable
- 1 USB Cable
- 4 6" Cable ties
- 1 Mounting kit
(4 x M4 x .7 x 8mm bolts and washers)
- 1 Dual-Lock Velcro
- 1 Software CD
- 1 Quick Start Guide



**INTEGRATED AMPS 4 HOLE
THREADED INSERTS FOR MOUNTING**
(MOUNTING SCREWS INCLUDED)



**MOLEX 8 PIN VEHICLE
INTERFACE CONNECTION**

USB MINI-B PORT



**VEHICLE DIAGNOSTIC
INTERFACE CABLE**

**DYNOJET
CAN-LINK
EXPANSION
PORT**



!!!---WARNING---!!!

• **FOR RACING VEHICLE USE ONLY** •

Note: This product is not for use on roads or vehicles subject to emission control requirements and is not legal for use or installation on motor vehicles operated on public highways in the State of California or other States where similar emission and decibel regulation laws may apply. The user shall determine suitability of the product for his or her use. The user shall assume all risk and liability in violation of regulations and any incurred financial obligations due to vehicle inspections or emissions tests.

DETERMINING YOUR OPERATING SYSTEM

WINDOWS XP

Click the **START** button then

Right-click **COMPUTER** and select **PROPERTIES**.

Click the **GENERAL** tab.

For a 32-bit version operating system, Windows XP Professional Version <Year> appears under System. Use PowerVisionSoftwareInstaller_x32_xxxx.msi for this installation.

For a 64-bit version operating system, Windows XP Professional x64 Version <Year> appears under system.

Use PowerVisionSoftwareInstaller_x64_xxxx.msi for this installation.

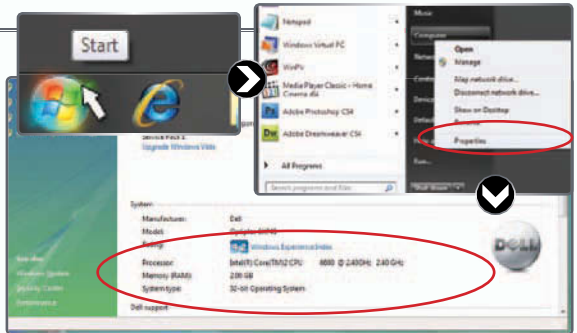


WINDOWS VISTA

Click the **START** button then

Right-click **COMPUTER** and select **PROPERTIES**.

Verify System Type.

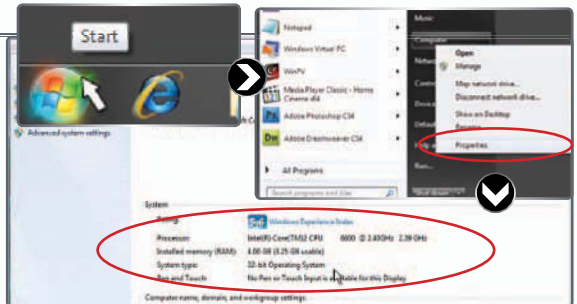


WINDOWS 7

Click the **START** button then

Right-click **COMPUTER** and select **PROPERTIES**.

Verify System Type.



WINPV SOFTWARE INSTALLATION

Use the following instructions to install the WinPV software on your computer.

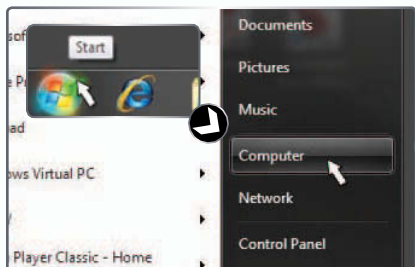
It is strongly recommended that you exit all other Windows programs before running this install program.

There are 2 ways to install the WinPV software:

1. From the WinPV CD included in the Power Vision Packaging.
2. Downloaded from the Power Vision Web site; www.flashyourharley.com

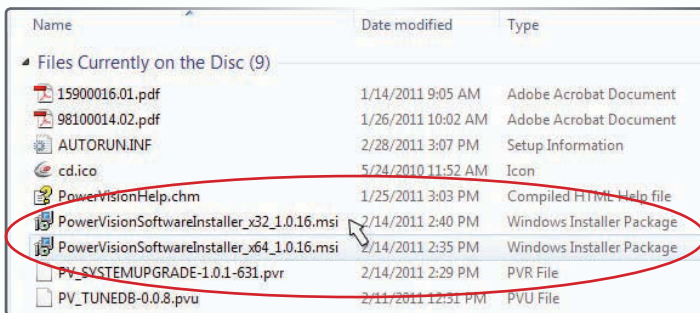
INSTALLATION FROM WINPV CD

- Insert the WinPV CD into your CD-ROM drive.



- Click the **START** button.
- Click **COMPUTER**

- Double-click the **CD/DVD icon** to browse the WinPV CD.



FOR 32-BIT OPERATING SYSTEMS:

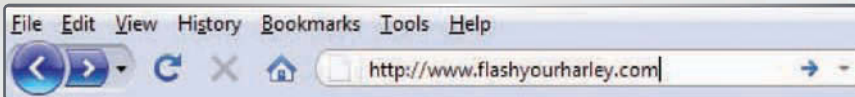
- Double-click **PowerVisionSoftware Installer_x32_xxxxx.msi** to launch the installation software.

FOR 64-BIT OPERATING SYSTEMS:

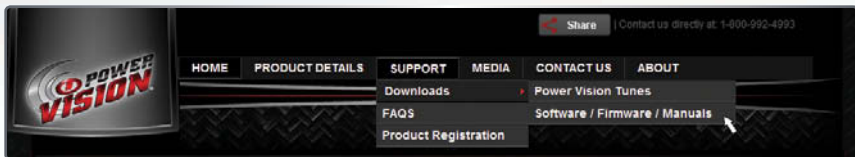
- Double click **PowerVisionSoftware Installer_x64_xxxxx.msi** to launch the installation software.

WINPV SOFTWARE INSTALLATION

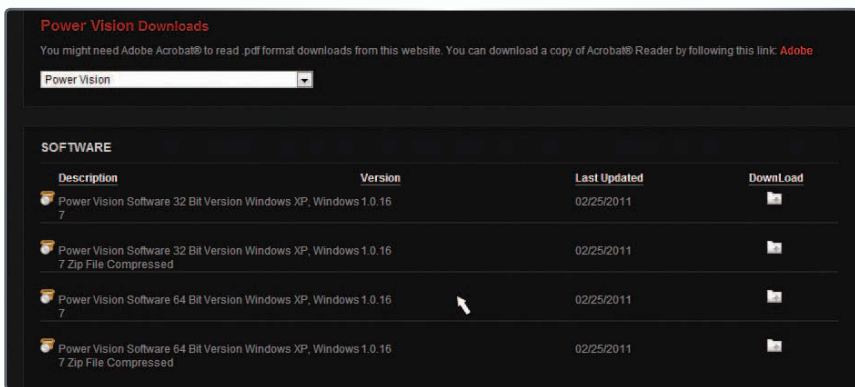
INSTALLATION FROM DOWNLOAD



- To Download the latest WinPV software visit www.flashyourharley.com



- From the top navigation menu, select **SUPPORT** then select **SOFTWARE/FIRMWARE/ MANUALS** from the fly-out menu.



- Select the download link on the right and be sure to download the proper installer for your operating system.

Note: The Zip File Compressed option is just a compressed version for faster downloading. This file will need to first be extracted with the appropriate software before installation.

- Save the downloaded file in a convenient location such as your desktop.
- Once downloaded, double click on the file to begin installation of the WinPV software.

WINPV SOFTWARE INSTALLATION

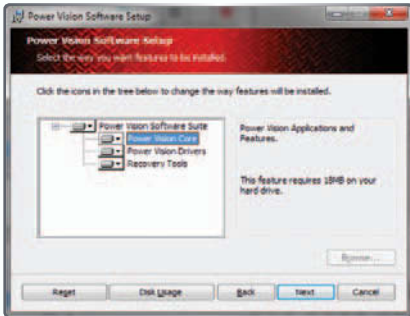


- Read the Welcome window and click **Next** to continue.



- Carefully read the WinPV license agreement, check the accept box, and click **Next** to continue.

Note: To install WinPV, you must accept this agreement. If you do not, Setup will close.



Next you are given the option to modify what applications and features the installer will install.

Note: Dynojet recommends that you do not change any of the default options or default locations.

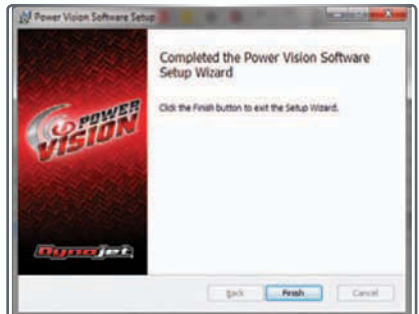
- Read the summary of your settings and click **Next** to continue.



Windows Vista and 7 Users

A Windows Security warning will pop up during the installation process. This is normal and will install the Power Vision Device Drivers.

- Click **Install** to continue.

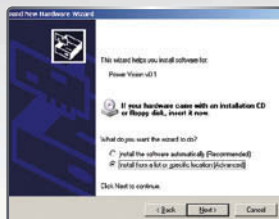


- Click **Finish** to complete the installation.

Continue with the Power Vision Driver Installation.

POWER VISION DRIVER INSTALLATION

WINDOWS XP DRIVER INSTALLATION



- Using the USB cable, connect the Dynojet Power Vision to your computer.
- The Found New Hardware window will open.
- Select **Yes, this time only** and click **Next**.
- Select **Install from a list or specific location** and click **Next**.
- Select **Search for the best driver in these locations**.
- Verify the location points to your Power Vision folder in Program Files.
- Click **Next**.
- Click **Finish** to close the wizard.
- Continue with Checking the WinPV Update Client.

WINDOWS VISTA AND 7 DRIVER INSTALLATION

Power Vision Device Drivers will be installed during Software installation.

A Windows Security warning will pop up during this process.

- Click **Install** to continue.

Note: during this process, a notice on the bottom of your screen will appear letting you know the status of the device driver installation progress.



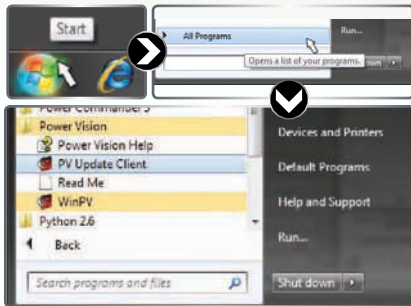
CHECKING THE WINPV UPDATE CLIENT

The PV Update utility will automatically check for any applicable updates.

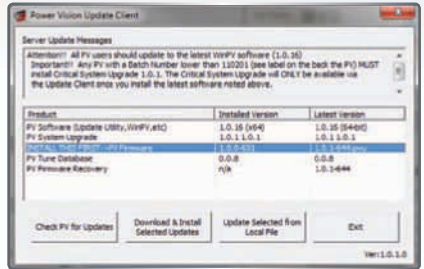
The latest versions of the Firmware, Software, Tune Database and any Critical Updates will be displayed in the right column. Your currently installed version will be displayed in the left column.

PLEASE READ the Update Messages on the top of the window for any critical updates and follow any direction given there first.

- Using the USB cable, connect the Dynojet Power Vision to your computer.



- Click **Start** on the Windows task bar and click **All Programs**.
- Select **PowerVision >PV Update Client**.

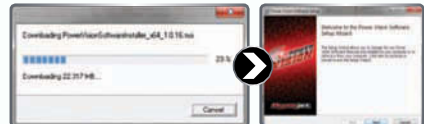


- Select the desired update to install.
- Click the **Download and Install Selected Updates** Button to begin the update process.



For firmware and Tune database updates;
Once the selected downloads are installed into the Power Vision, a message will display if the update was successful or not.

- Click **Ok** to complete.



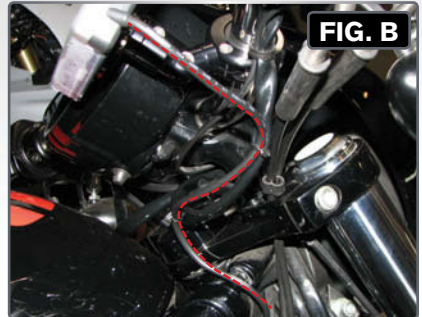
For Software and Update Client updates;
Once the updates download, the software install wizard will be started to install the newer version of the software.

See page 5 for further details.

The update client will need to be restarted for any further updates.

INSTALLING THE POWER VISION

This installation was done on a 2009 Harley-Davidson Night Rod.
Your bike and set-up may vary.



- Connect the Power Vision to the ECM's diagnostic port.

Note: The Power Vision may be damaged if installed improperly.

The location of the diagnostic port varies depending on model, so please refer to a service manual or contact Dynojet for the exact location.

Use caution, many models use the same style connector for accessories, your Power Vision MUST be connected to the diagnostic port.

- Route the Power Vision cable away from any moving or hot parts.

Dynojet recommends using zip ties to secure the cable to existing non-moving components.



- The Power Vision module may be mounted to the bike's handlebars using Techmount hardware. The Power Vision does not need to remain on the bike.

Figure C and Figure D are examples of the Power Vision module mounted to a 2009 Night Rod using the Techmount bracket.

For more information on available mounting accessories visit: www.techmounts.com

POWER VISION TUNE FILE MANAGEMENT

There are three types of tunes that can be flashed to your ECM with the Power Vision:



1. Dynojet Pre-Configured Tunes



2. Custom Tunes



3. Load Copy

IMPORTANT:

Flashing your ECM with any one of these types of tunes will automatically save a backup of your Original Tune, and will permanently lock the Power Vision to your bike's ECM.

You can flash your ECM with tunes as many times as you like, but the Power Vision will only be permitted to flash tunes to the ECM it's locked to. The Power Vision's other features, like datalogging / monitoring, diagnostics, clearing adaptive values, etc. will still be available to be used on any bike it was designed for, as well as the bike it's locked to.



NOTE:

Any combination of the three types of tune files can be placed in the Tune Manager. There are 6 "slots" in the Tune Manager, and you can occupy a single slot or all six if you choose.

For example, you could have a Dynojet Pre-Configured Tune in Slot 1, a Custom Tune in Slot 2, and a Copy of Original Tune in Slot 3. You can think of the Tune Manager as an area that "holds" the tunes, or "stages them" prior to the Power Vision flashing them to your ECM. You can overwrite the tunes that occupy the various slots at any time, or manage your tune files in the Tune Manager by using the WinPV software.



FLASHING A DYNOJET PRE-CONFIGURED TUNE FILE



The Power Vision is loaded with Pre-Configured Tunes developed by Dynojet when it leaves our facility. Dynojet makes every effort to have a tune file available for your specific combination when you receive your Power Vision (pre-loaded in the device), but in some cases you'll need to use the Update Client to ensure you have the latest tunes available from Dynojet.

You can also visit <http://www.flashyourharley.com> to search our tune database and download a tune for your combination.

FLASHING A DYNOJET PRE-CONFIGURED TUNE FILE

Use the following steps to flash a Dynojet Pre-Configured Tune to the ECM:



- Select **Program Vehicle**.



- Select **Load Tune**.



- Select **Dynojet Pre-Configured Tunes**.

The Power Vision will automatically search for compatible tunes.



- Select a Dynojet Pre-Configured Tune File to flash.
- Touch **Select**.



- Verify the tune information. If the tune information is correct, touch **Continue**.



- Select a slot to save the selected tune file.

Note: If there is any data in the selected slot, it will be overwritten.

- Touch **Select**.



The tune is now ready.

- Select **Flash** to flash this tune to the ECM.

Note: During the flash process, do not turn off the bike. Once complete, you will be prompted to turn the bike off for 10 seconds.

- Select **Edit** to edit this tune.
- Select **Exit** to exit the screen without any changes.



Note: You can edit any tune that's loaded in the Tune Manager prior to flashing your ECM. The Power Vision allows you to make basic adjustments to your tunes directly on the device without using a computer. In order to gain full access to your tune files, you'll need to download them from the Power Vision to WinPV, our custom tuning software.

FLASHING A CUSTOM TUNE FILE

CUSTOM
TUNES

Custom Tunes may or may not be pre-loaded from a reseller that specializes in custom tuning. Dynojet does NOT load custom tunes in the Power Vision when it leaves our facility (we load Dynojet Pre-Configured Tunes). You may also receive Custom Tunes via email that can be uploaded to the Power Vision using WinPV, our custom tuning software.

Use the following steps to flash a Custom Tune file to the ECM:



• Select **Program Vehicle**.

• Select **Load Tune**.

• Select **Custom Tunes**.



• Select a Custom Tune File to flash.

• Touch **Select**.

• Verify the tune information. If the tune information is correct, touch **Continue**.

The Tune is now ready.

• Select **Flash** to flash this tune to the ECM.

Note: During the flash process, do not turn off the bike. Once complete, you will be prompted to turn the bike off for 10 seconds.



• Select **Edit** to edit this tune.

• Select **Exit** to exit the screen without any changes.

Note: You can edit any tune that's loaded in the Tune Manager prior to flashing your ECM. The Power Vision allows you to make basic adjustments to your tunes directly on the device without using a computer. In order to gain full access to your tune files, you'll need to download them from the Power Vision to WinPV, our custom tuning software.

LOADING A COPY OF THE ORIGINAL TUNE FILE, OR A COPY OF THE CURRENT TUNE FILE

LOAD
COPY

The Power Vision will allow you to use either a **COPY OF ORIGINAL** tune or a **COPY OF CURRENT** tune files.

The COPY OF ORIGINAL tune file is a copy of the tune that was present in your ECM when the Power Vision first locked to your ECM. In other words, it is a copy of the backup file that was created and stored in the Power Vision. This is a great way for those who are happy with the way their bike runs, but want access to their existing tune in order to make a few adjustments.

The COPY OF CURRENT tune file is a copy of the CURRENT tune that has been flashed to your ECM.

Use the following steps to load and flash either a Copy of Original tune or a Copy of Current tune file to the ECM:



• Select **Program Vehicle**.

• Select **Load Tune**.

• Select **Load Copy**.



• Select the type of tune you want to copy.

• Select a slot to save the Copy of Original tune file.

The Tune is now ready.

• Select **Flash** to flash this tune to the ECM.

You may either select to Load a Copy of the Current Tune or a Copy of the Original Tune into the tune manager.

Note: If there is any data in the selected slot, it will be overwritten.

• Touch **Select** to continue.

Note: During the flash process, do not turn off the bike. Once complete, you will be prompted to turn the bike off for 10 seconds.

• Select **Edit** to edit this tune.

• Select **Exit** to exit the screen without any changes.

Note: You can edit any tune that's loaded in the Tune Manager prior to flashing your ECM. The Power Vision allows you to make basic adjustments to your tunes directly on the device without using a computer. In order to gain full access to your tune files, you'll need to download them from the Power Vision to WinPV, our custom tuning software.



AVAILABLE POWER VISION ACCESSORIES

AUTOTUNE FOR POWER VISION

This new and exciting accessory is designed for use exclusively with the Dynojet Power Vision. The Auto Tune module by itself does not tune your vehicle; rather it transmits wide band Air-Fuel Ratio (AFR), or more precisely, Lambda values to the Power Vision. This data is critical to determine exactly how rich, or how lean your vehicle is running. Unlike the stock OEM narrow band oxygen sensors, the Bosch wide band sensors included in this Auto Tune kit are extremely accurate at ALL operating ranges of your vehicle. In order to get the most from your Auto Tune kit, you must use a software application called Log Tuner. Combining Auto Tune with Log Tuner puts you in control and ensures you end up with a safe and powerful tune. Tune like the Pros with precise fuel and spark advance corrections that are applied to your tune with a few clicks of the mouse.

The kits come with everything you need, including a Y-adapter to provide power and communication simultaneously to both the Power Vision and the Auto Tune module. You can also purchase the Y-adapters and the extra long CAN-to-CAN cable separately if need be.



PRODUCT DESCRIPTION

PART

AUTOTUNE FOR POWER VISION KITS

AUTOTUNE, HD-J1850	AT-110
AUTOTUNE, HD-J1850 with o2 Bungs	AT110B
AUTOTUNE, HD-CAN	AT-210
AUTOTUNE, HD-CAN with o2 Bungs	AT-210b

PRODUCT DESCRIPTION

PART

OPTIONAL CABLES

72" CAN to CAN Cable	76950427
Y-ADAPTER,HD-J1850	76950388
Y-ADAPTER,HD-CAN	76950389

POWER VISION VISOR AND QUICK CLIP SYSTEM

This optional accessory will result in better screen visibility and a provision to quickly detach the Power Vision from your bike. Made from high quality, tough ABS plastic with a black chrome finish on the visor, this optional accessory is a functional enhancement that looks great as well. The embedded "NutSerts" allow you to securely attach the Visor / Quick Clip accessory to a mounting system such as those offered by TechMounts, or any system with an AMPS 4-hole pattern.



NOTES





!!!---WARNING---!!!
FOR RACING VEHICLE USE ONLY

Note: This product is not for use on roads or vehicles subject to emission control requirements and is not legal for use or installation on motor vehicles operated on public highways in the State of California or other States where similar emission and decibel regulation laws may apply. The user shall determine suitability of the product for his or her use. The user shall assume all risk and liability in violation of regulations and any incurred financial obligations due to vehicle inspections or emissions tests.