



Absolute Top Level®

401 South Grand Ave., Santa Ana, CA 92705
Tel: 714.550.6070 Fax: 714.550.9661 www.twobros.com



Yamaha R1

Slip-On Exhaust System with S1R Exhaust Canister
Part # 005-4260405-S1



Parts List

Qty.	Description	Part Number
1	S1R Muffler	8" Carbon Fiber
1	S1R Muffler Clamp	005-2C-S1
1	S1R Muffler Clamp Liner	005-2C-S1-A
2	Barrel Clamp 65mm	005-27-65MSH
1	Muffler Bracket	005-426-B
1	Socket Head Cap Screw 8x20mm	005-SH820
3	Flange Nut 8mm	005-FN8
2	O2 Sensor Bolt Kit	005-92-22KIT
2	45mm Springs	005-S45
1	Permatex Anti-Seize	031-P09175
1	TBR Sticker Kit	015-10212

IMPORTANT - PLEASE READ CAREFULLY

We recommend that this performance part be installed by a qualified motorcycle technician. If you have any doubts as to your ability to install this performance part, please consult with your local motorcycle dealer. Read all instructions first before starting installation. Make sure the motorcycle and exhaust system are completely cool before starting the installation. Also, make sure the bike is secure on a centerstand or ideally a service lift during installation. Be sure to save all stock components for possible use later.

Installation Instructions

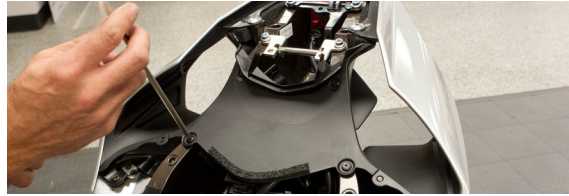
1. Make sure the bike is completely cool before starting the installation. Make sure the bike is secure on the side stand or ideally a service lift.
2. Remove right x-up cover.
3. Remove OEM muffler and bracket.
4. Remove lower right and left side exhaust cover to access O2 sensor.



5. Remove ex-up servo cables from exhaust.
6. Remove main seat and passenger seat.
7. Remove battery cover.



8. Remove plastic cover.



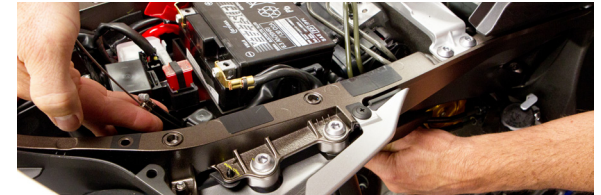
9. Remove servo retaining bolt and lift servo up to access servo cover screws.



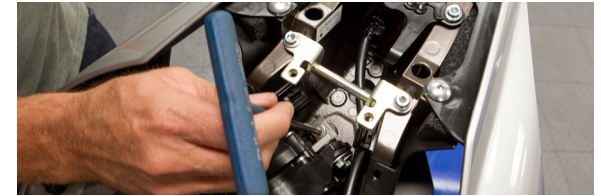
10. Remove servo cover and remove servo cables. Be sure not to damage servo during the process.



11. Remove cables from motorcycle by pushing cables in from the top and out through the bottom of tail section.



12. Re-install servo motor and secure in place with retaining bolt. The servo motor must be connected and functions properly to keep engine light off.

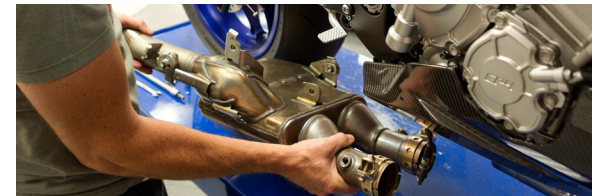


13. Re-install cover and seats.



14. Unscrew both O2 sensors from exhaust body.

15. Remove mounting bolts from OEM exhaust body and remove from motorcycle.



16. Install TBR y-pipe by using the supplied t-bolt clamps, OEM bolt, and supplied 8mm nut on center bracket.





401 South Grand Ave., Santa Ana, CA 92705
Tel: 714.550.6070 Fax: 714.550.9661 www.twobros.com



Yamaha R1

Slip-On Exhaust System with S1R Exhaust Canister
Part # 005-4260405-S1



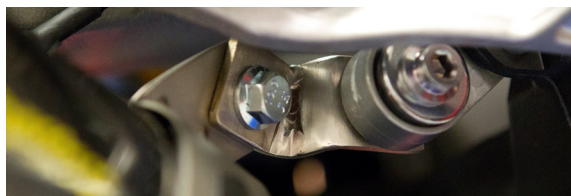
Parts List

Qty.	Description	Part Number
1	S1R Muffer	8" Carbon Fiber
1	S1R Muffer Clamp	005-2C-S1
1	S1R Muffer Clamp Liner	005-2C-S1-A
2	Barrel Clamp 65mm	005-27-65MSH
1	Muffer Bracket	005-426-B
1	Socket Head Cap Screw 8x20mm	005-SH820
3	Flange Nut 8mm	005-FN8
2	O2 Sensor Bolt Kit	005-92-22KIT
2	45mm Springs	005-S45
1	Permatex Anti-Seize	031-P09175
1	TBR Sticker Kit	015-10212

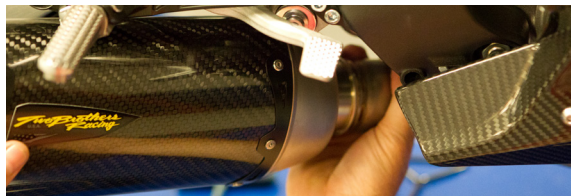
Installation Instructions



17. Attach supplied TBR muffer mounting bracket using the OEM bolt and supplied 8mm nut to OEM mounting point behind rear set.



18. Attach TBR slip muffer assembly to y-pipe using supplied springs.



19. Slide rubber lined muffer clamp over muffer and attach to previously installed bracket using the supplied 8x20mm socket head cap screw and 8mm flange nut.



20. Re-install both O2 sensors.



21. Re-install both lower exhaust covers.
22. Remove remaining OEM exhaust body mounting grommet from mounting location that are not used.
23. Double check your work to ensure everything is tight and properly installed.
24. Before you run the bike, clean off all fingerprints and dirt, as any oily residue will etch the metal and become somewhat permanent when the system gets hot. Run the bike and enjoy. It is normal for some white smoke to appear the first time you start the bike. This is packing/manufacturing oil from inside the pipe burning off. Check for gaps or leaks. If you find a leak, a little high temperature silicon sealant should fix it. After 50 to 100 miles, recheck all fasteners for tightness.

Care & Cleaning / Warranty

Care & Cleaning

Keep system free of dirt and moisture. Store in a cool, dry place. For cleaning use a mild spray cleaner. Always apply cleaner or polish with a soft, clean cloth.

Carbon Fiber Mufflers: Always make sure the fiberglass packing inside is in good condition and not burned out, as exhaust heat inside an empty canister will deteriorate the Carbon Fiber sleeve. TBR sells repack kits (TBR part # 005-10038) that include new rivets and repack material as well as a drill bit (#30), making it easy to do yourself. Also, NEVER dyno test your bike with carbon fiber mufflers installed - the intense heat and lack of cooling air can quickly cause the CF material to burn. Two Brothers Racing does not provide a warranty for burned carbon fiber.

Repack all road canisters every 3,000 miles. Part #005-10038